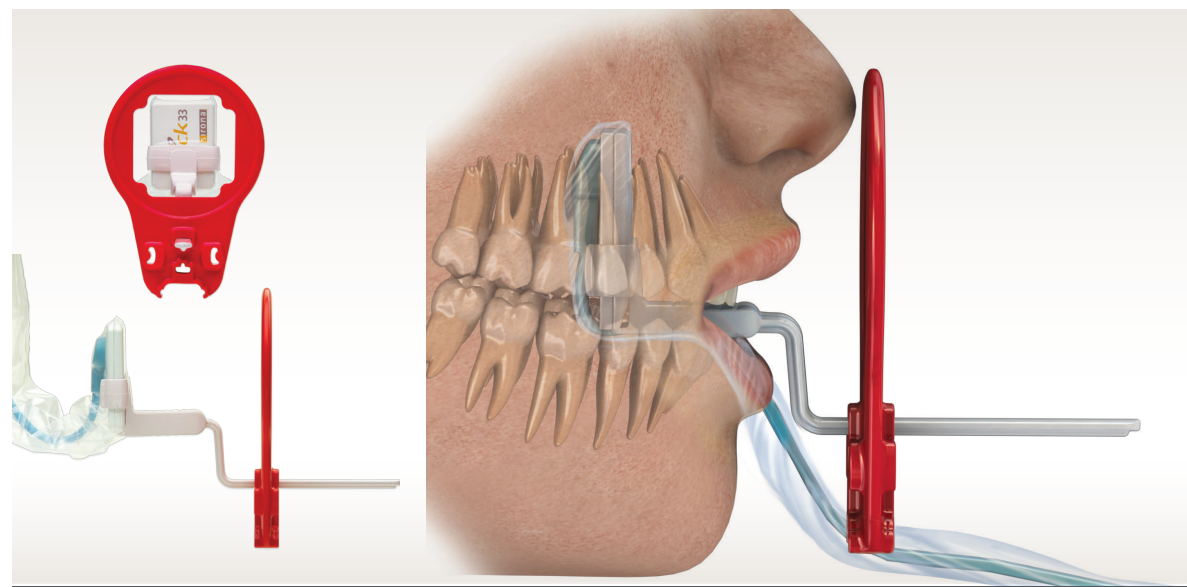
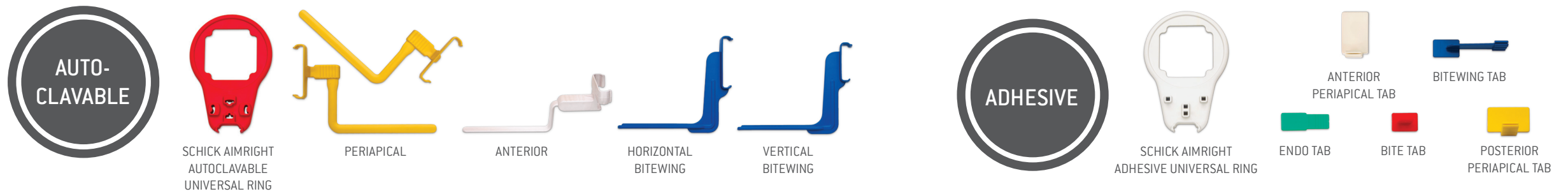


USER GUIDE

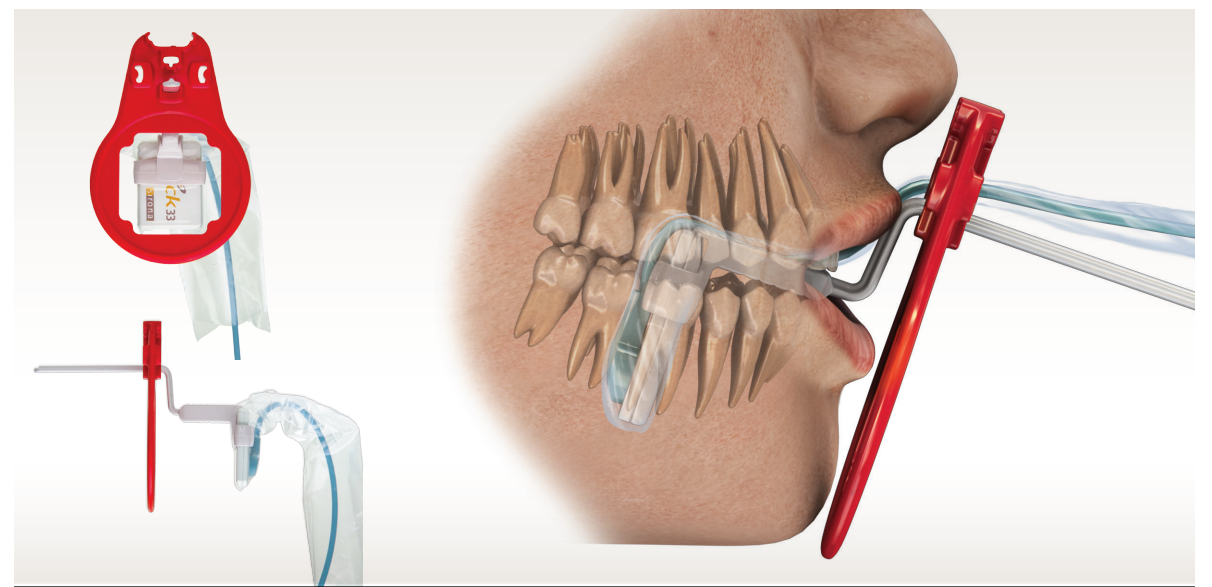
SCHICK AIMRIGHT POSITIONING SYSTEMS

Image capture is easy with the Schick AimRight Positioning Systems. To ensure optimum results, follow these guidelines:

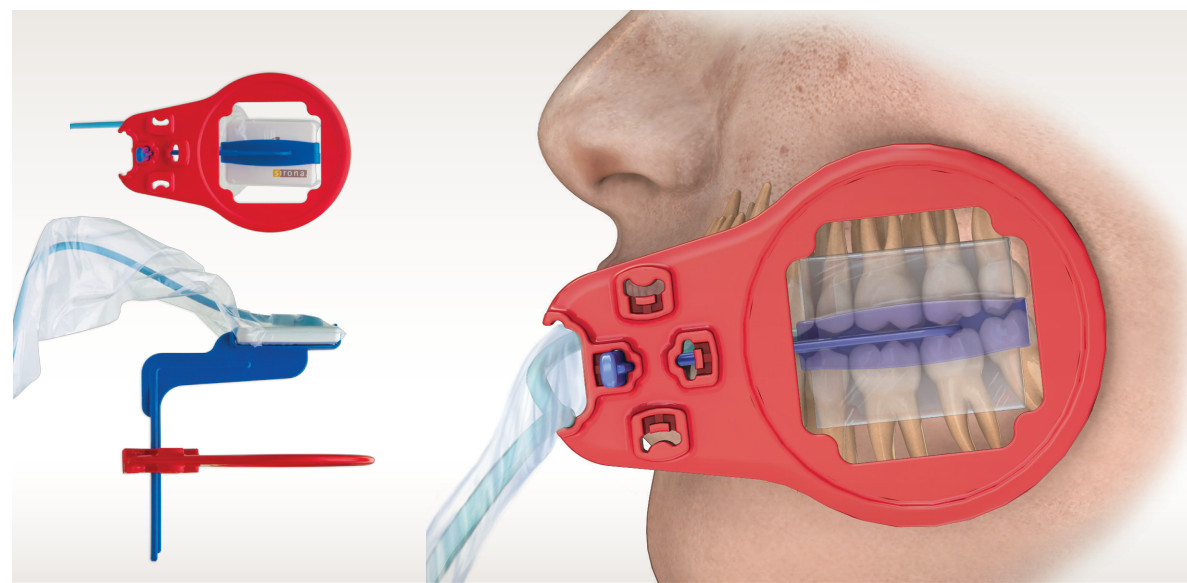
ALWAYS USE A NEW SENSOR SHEATH FOR EVERY PATIENT WHEN CAPTURING IMAGES.



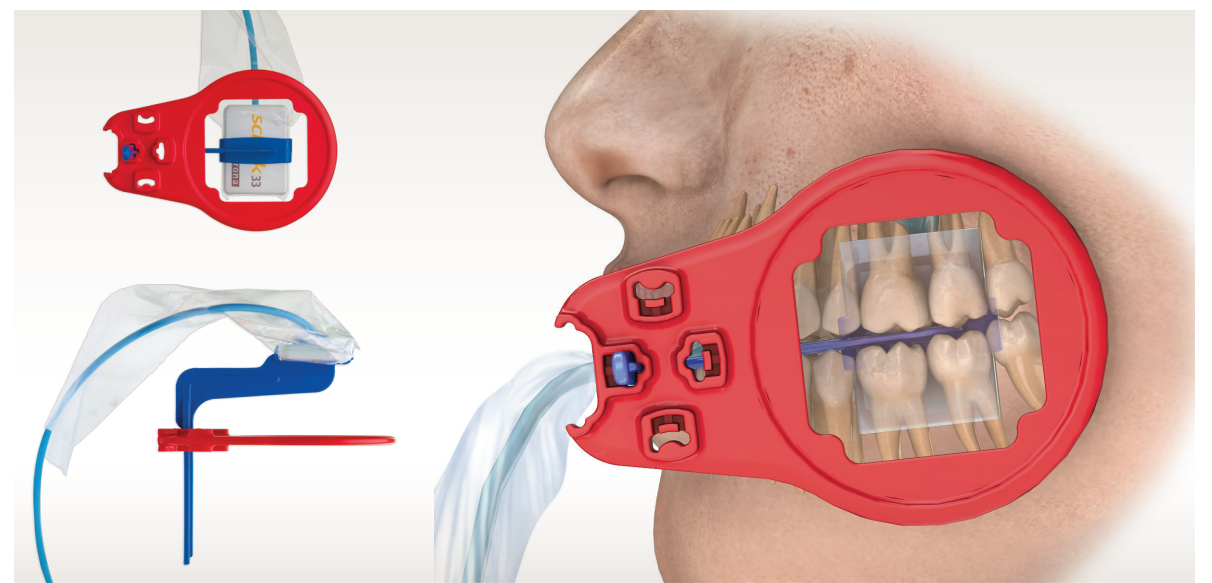
1 MAXILLARY ANTERIOR PLACEMENT
Place the distal end of the sensor against the roof of the mouth, with the incisal edge of the teeth against the front of the tab. Sensor should be parallel to the long axis of the maxillary anterior teeth. Ensure the ring is as close to the patient's face as possible and place the x-ray head against the ring.



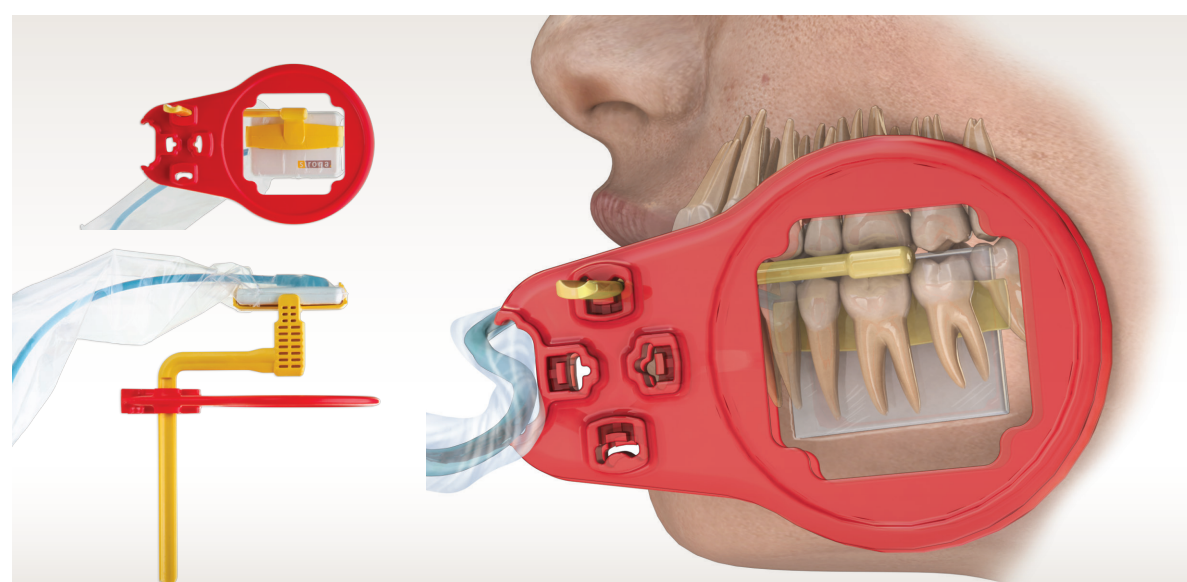
2 MANDIBULAR ANTERIOR PLACEMENT
Place the sensor into the lower anterior area, positioning it on top of the tongue, parallel to the first molar. Sensor should be centered on the mandibular anterior teeth when the patient is occluded. Ensure the ring is as close to the patient's face as possible and place the x-ray head against the ring.



3 HORIZONTAL BITEWING PLACEMENT
To capture a horizontal bitewing image, place the sensor between the tongue and the teeth with the bite area resting on the premolar teeth. The patient should close on their back teeth to ensure centric occlusion and as they do so, the arm should be angled gently toward the midline of the mouth to ensure the sensor is parallel with the teeth and to provide open contacts. Ensure the ring is as close to the patient's face as possible and place the x-ray head against the ring.



4 VERTICAL BITEWING PLACEMENT
The sensor should enter the mouth horizontally. Once past the incisors, "roll" it into a vertical position. The sensor should be placed with the cable pointing upwards toward the hard palate. Ensure the ring is as close to the patient's face as possible and place the x-ray head against the ring.

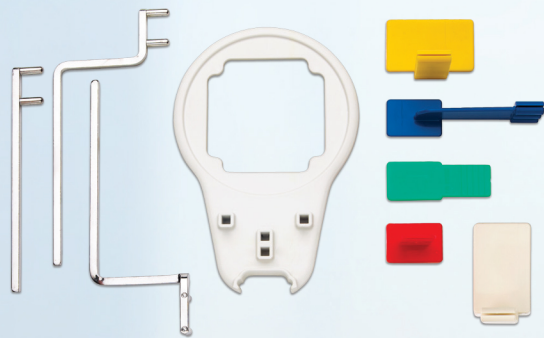


5 MANDIBULAR PERIAPICAL PLACEMENT
Retract the cheek with a finger and place the sensor between the tongue and the teeth, bringing the cheek around the bite block. Then slide the sensor down and in gently until it is in position—the bite tab should be directly above the teeth to be imaged. Ensure the ring is as close to the patient's face as possible and place the x-ray head against the ring.

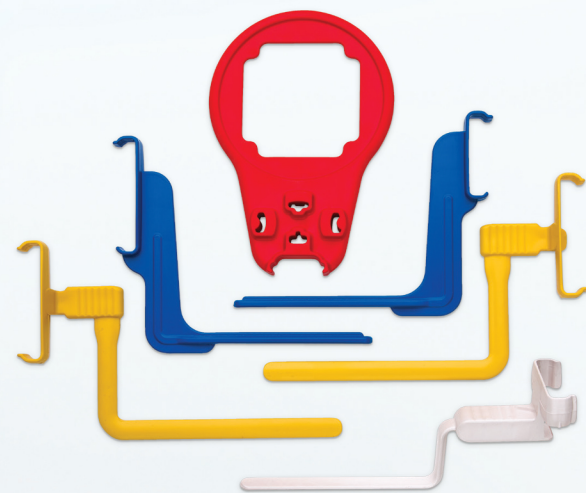


6 MAXILLARY POSTERIOR PLACEMENT
The sensor/aiming device is angled upward toward the midline with placement of the bite block under the teeth to be captured. The sensor should be angled slightly past the midline of the palate as the patient closes for comfort and to ensure capture of the apices. Ensure the ring is as close to the patient's face as possible and place the x-ray head against the ring.

Always insert sensor into AimRight grip by aligning one end then "snapping" into place. Refrain from sliding sensor into the grip holder.



AIMRIGHT ADHESIVE POSITIONING SYSTEM



AIMRIGHT AUTOCLAVABLE POSITIONING SYSTEM

GET IT RIGHT THE FIRST TIME.

The revolutionary new sensor positioning system that ensures enhanced diagnostics and patient peace of mind.

MADE IN THE USA

SIRONA DENTAL, INCORPORATED

30-30 47TH AVENUE

LONG ISLAND CITY, NEW YORK 11101 USA

1.877.724.4254

