



Technical Specifications:

Cartography: 2D mapping
CMOS sensor: 400 x 400 px
Spectrophotometer: Measuring range 400-700 nm
Dimension of the measuring head in mm: L. 76 / Diameter: 25
Screen: Touch screen
Resolution: 320 x 240 NTSC
Battery: 3,7 V 2000 mAh
Memory capacity: 40 shade-taking files

Wifi: Bluegiga wf121 802.11 b / g / n
Weight of the handpiece: 450 g
Dimensions of the handpiece: L. 210 x L. 75 x H. 155
Weight of the dock: 165 g
Dimensions of the dock: L. 133 x L. 101 x H. 43
Output: USB 2.0
Main plug: 5V 1Ah

Rayplicker™ is a medical device class I.

Compatibility:



Rayplicker™ Pics App Solution:

Free download



Package contents:

Rayplicker shade-matching device
 Docking station
 Calibration tips x6 (Sterilization in autoclave)
 Protective sheaths x50
 Cables and connectors - Adapters
 Quick start guide

Notes:

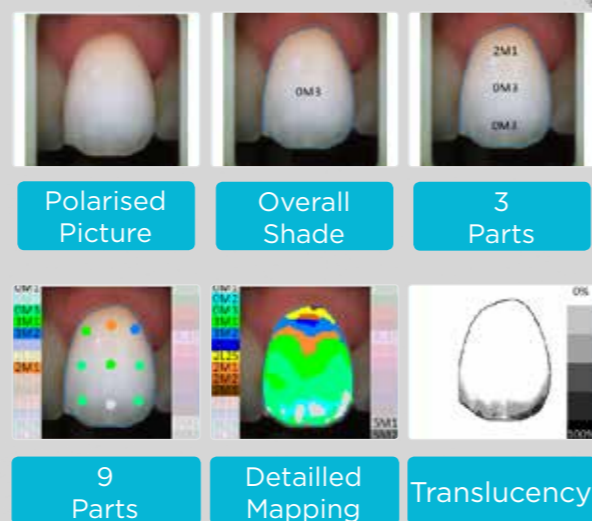
01/2018. BOREA. Non contractual document. - Ref. ENG.V003. All rights reserved.

RAYPLICKER™
ONE VISION • MILLIONS SHADES

DISCOVER
THE SHADE-TAKING
CONNECTED SYSTEM



OBTAIN AN OPTIMAL SHADE-TAKING IN FEW SECONDS



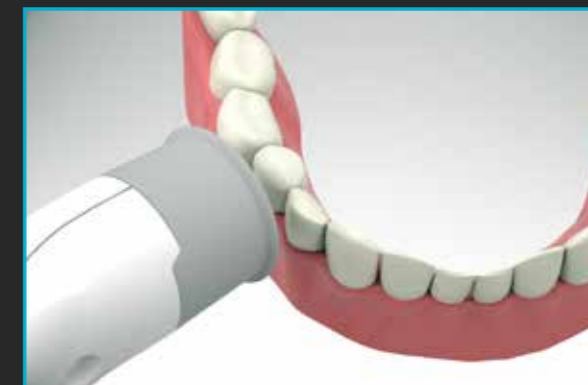
- Spectrophotometer (Measuring range 400-700 nm)
- Automatic calibration
- 2D mapping
- Touch screen
- Wifi transfer
- Docking station (Charging and USB transfer)

TAKE ADVANTAGE OF A FULL DIGITAL SYSTEM

1

TOOTH SHADE AND TRANSLUCENCY ANALYSIS

A plug and play shade-taking device automatically calibrated during each acquisition.
 Patented measuring head for an access until premolar teeth.
 The calibration tips can be autoclaved.
 No influences from external environment.
 Determine the shade in a scientific and reliable way thanks to a constant and calibrated analysis.



2

SOFTWARE AND MOBILE APPLICATION

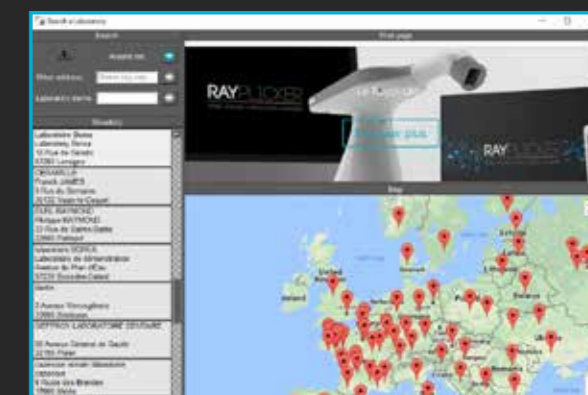
A user-friendly software for analysing and save data.
 Create easily a digital order form.
 A complete database with several shade guides available for an easier data analysis.
 Realise automatic shade conversions.
 A mobile application to complete the order form with patient pictures. (free download from online platforms)



3

GEOLOCATION OF LABORATORIES (Option: Rayplicker™ Service Pack)

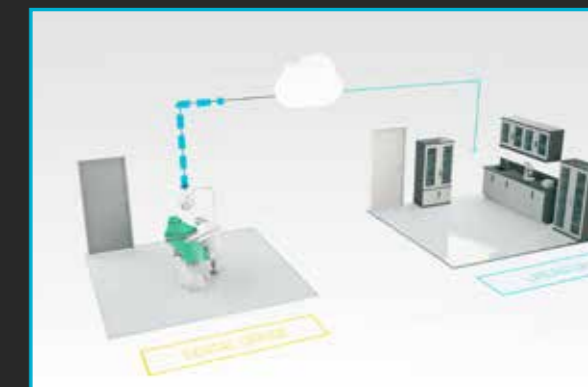
Find labs using the solution anywhere in the world.
 Send a numerical order to the laboratories (by Cloud or mail)
 The lab receives all of the shade-taking information.
 A community platform to easily communicate about its company.



4

INTERCONNECTION BETWEEN DENTAL PRACTICE AND LAB

Follow your orders in real time on the main page of the software.
 Communicate easily and effectively with laboratories.



Rayplicker™ is a medical device class I. Manufacturer: BOREA. CE mark. It is a device reserved for dental professionals and not reimbursed by the health insurance agencies. Read carefully the user manual before use.