

ENDO-MATE DT2 Standard Sets



ENDO-MATE DT2 with 20:1 Head

MODEL
ENDO-MATE DT2 (230V)

ORDER CODE
Y1004230

- Control unit • Motor and Cord • MP-F20R head (20:1)
- Handpiece stand • AC adaptor

ENDO-MATE DT2 without Head

MODEL
ENDO-MATE DT2 W/O (230V)

ORDER CODE
Y1004231

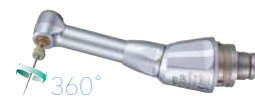
- Control unit • Motor and Cord
- Handpiece stand • AC adaptor

Specifications

- Power supply : AC 230 V 50/60 Hz and Battery pack
- Number of Programs : 9
- Max Torque : 7 Ncm (when using 20:1 head)
- Speed range : 100 -13,000 min⁻¹ (With 20:1, 1:1 geared heads)
- Charge/Continuous use : 5 h / 2 h (depending on workload)
- Dimensions : W 93 x D 147 x H 100 (mm)
- Weight : Unit 440 g / Motor handpiece and Cord 95 g

*Files are not included.

Push type



MODEL
20:1 MP-F20R
16:1 MP-F16R

ORDER CODE
Y110044
Y110096

- Miniature Head • 20:1 / 16:1 Reduction
- For Ni-Ti files (ø2.35) • Push Button Chuck



16:1 MPA-F16R

ORDER CODE
Y110097

- Miniature Head • 16:1 Reduction
- For Ni-Ti files (ø2.35) • Push Button Chuck
- Connection for Apex locator (for long shank)

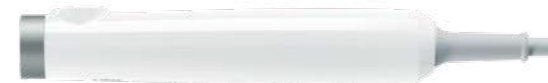


20:1 MPAS-F20R
16:1 MPAS-F16R

ORDER CODE
Y110046
Y110098

- Miniature Head • 20:1 / 16:1 Reduction
- For Ni-Ti files (ø2.35) • Push Button Chuck
- Connection for Apex locator (for short shank)

ENDO-MATE DT2 Motor and Cord



MODEL	PRODUCTS	ORDER CODE
ENDO-MATE DT2 Unit		U1138001
ENDO-MATE DT2 Motor and Cord		E1169001
ENDO-MATE DT Adaptor		U480
Handpiece Stand		Z095205

MODEL	PRODUCTS	ORDER CODE
Cord For MPA / MPAS		C876021
Connection Cord Clip		C876509
Rechargeable Batteries		U421070
F-Type Spray Nozzle		Z256090



The heads can be washed in the thermodisinfector.



The heads are autoclavable up to 135°C.



CREATE IT.

smart
& portable

ENDO-MATE DT2

ENDODONTIC MICROMOTOR





ENDO-MATE DT2

ENDO-MATE DT2 has been developed for use with most major brands of Ni-Ti files. The preprogramming function allows highly efficient treatments using different file manufacturer's protocols. The control unit has been designed to be lightweight and compact. It is fitted with a rechargeable battery providing high mobility. The lightweight and slim handpiece allows easy and comfortable handling for high performance.

Features of ENDO-MATE DT2

1. Compatible all popular brands of Ni-Ti files
2. Torque control, with an auto-reverse function
3. Compact desktop unit
4. 2 way power source (AC Cord / rechargeable battery pack)
5. Lightweight, smart and comfortable handpiece

Compatible all popular brands of Ni-Ti files

Up to 9 settings (speed and torque etc) can be programmed simply by pushing the memory function button. It's easy to switch between each preset program allowing work with all popular Ni-Ti file manufacturer's protocols.

Gear Ratio	Rotation Speed(min ⁻¹)
20:1	100~650
16:1	125~800

Auto reverse function

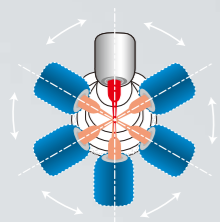
The auto reverse function activates when the preset torque level has been reached.

2 way power source

ENDO-MATE DT2 has been designed to work with a rechargeable battery for portable use or can be powered using the AC adaptor supplied.

Other function

Beeping sound notifies user when preset torque limit has been reached.



6 head angles for ease of treatment

Depending on the position of treatment site, the head angle can be adjusted to the best angle.



Quick coupling

Quick coupling allows for easy head exchange. All heads are autoclavable up to 135°C.



2-way ON/OFF switch

Features are :

- A: Push and release - Micromotor operates continuously until the button is pushed again.
- B: Push and hold - Micromotor operates continuously until the button is released.

Push type ultra miniature head

Allows fast and easy exchange of files during procedures. Compact head offers excellent visibility of treatment spots.



Lightweight, smart and ergonomic handpiece.

<https://stomshop.pro/>