

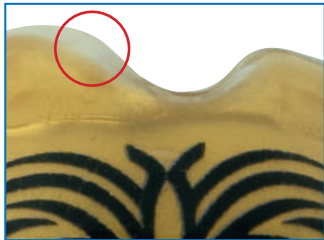
New

please follow instructions

PLAY SAFE[®] triple / triple-light sports-mouthguard

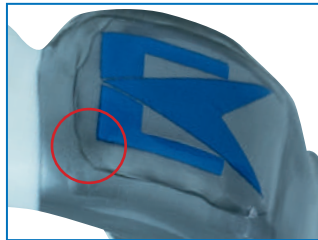
From the fourth quarter of 2024, Erkodent will supply the Playsafe triple plates with the insulating foil on the colored side. This means that the transparent layer is on the outside (vestibular) for a nicer appearance.

For thermoforming, the insulating foil always faces the model.

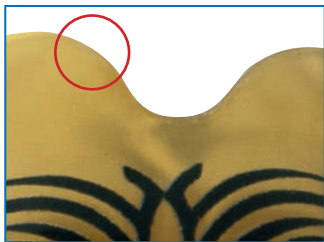


until now

Transparent on the inside:
The sports mouthguard has a transparent edge after finishing.

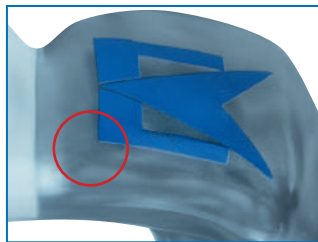


Transparent on the inside:
Visible edges of the Playsafe 4u label cannot be completely avoided.



as of now

Transparent on the outside:
The color of the sports mouthguard extends right to the edge.



Transparent on the outside:
Visible edges of the Playsafe 4u label are completely avoidable.

Playsafe 4u
configure label:



Materials for fabrication: Playsafe bite spacer (177 811), 1 Playsafe face chuck (177 812)
1 Playsafe triple (-light) set 177 820 (177 860): 1 Playsafe triple (-light) foil (colour has to be indicated), 1 label, 1 Erkobox, 1 sample FG-sheet, accompanying documents

Materials for the model preparation: Erkogum (110 844) for blocking-out, high-fusing wax (725 080) to fill bubbles in the plaster

Materials for finishing: Finishing set Quick 3 (110 830), special scissors XL (220 301), hot air burner (177 540), FG-sheets (177 400)

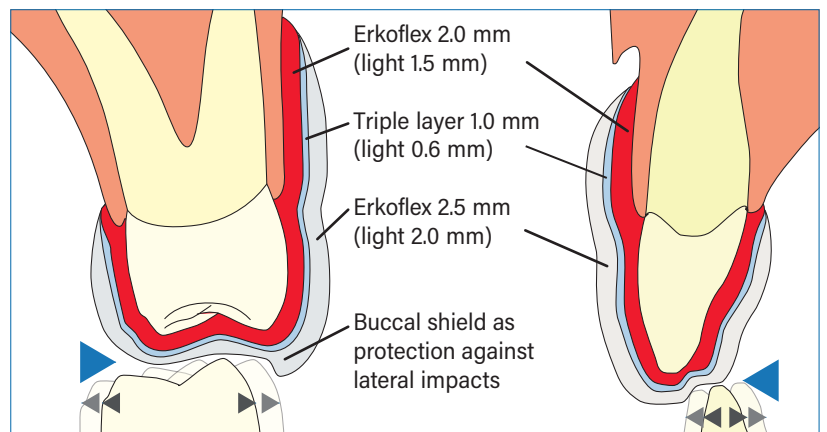
- Hints:**
- For an optimal mouthguard, the upper jaw model should represent the entire vestibule.
 - To determine the bite proportions there is ideally a construction bite available.
 - With **Playsafe 4u** almost each favorite design on all Playsafe triple sports-mouthguards is possible.
 - The easiest way to fabricate a Playsafe triple is with the **Erkoform** units as of **series 3** with **Occluform-3**.

Video fabrication
Playsafe triple



Fabrication with the Erkopress units on request

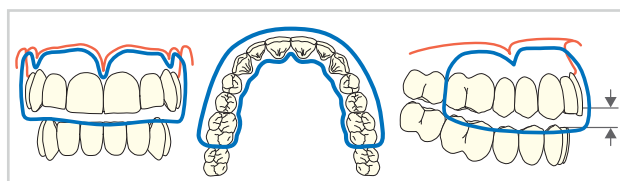
Total foil thickness Playsafe triple **5.5 mm**, Playsafe triple-light **4.1 mm**



- **CE** marking (EU: 2016/425)
- Playsafe triple foils are ex works three-layered, thermform only one time, imprint the articulation surface, allow to cool off, finalize - ready.

The articulation surface that allows the athlete freedom of movement shows a lateral stop (buccal shield ►) and protects against lateral impacts.

A Playsafe triple sports mouthguard is always fabricated for the upper jaw. It covers as much as possible of the vestibulum and ends palatinally about 1 mm in the gingival area.



The Playsafe triple includes the first molar. Without construction bite lift the bite for 4-5 mm (triple) and for 3-4 mm (-light) (corresponds to 3/4/5 scale marks on the Occluform-3 supporting pin).

Model preparation:
Fill plaster bubbles with blocking out wax. Block out undercuts of a possibly existing gap (special case) with Erkogum.

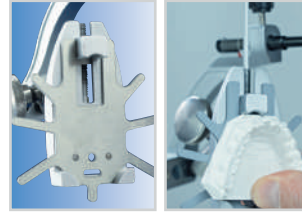


Trim or print the lower jaw model close to the row of teeth. Can also be used if only half of the tooth height is represented.



Fabrication with the Erkoform-3d units, here -3d motion and Occluform-3

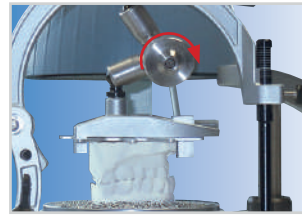
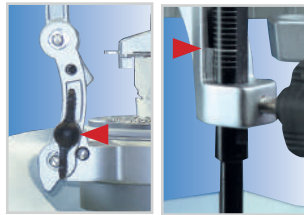
1. Fix the upper jaw model in the Occluform-3 model pot, the vestibulum has to protrude from the edge of the pot. Fill the pot with granules, shake the pot to ensure that the granules will get underneath the model as well. **Compact the granules well!**



2. Put the Playsafe face chuck into the upper model disc and fix the lower jaw model onto it.

Occ3-PMF for fixing print models (188575 Occ3-PMF available from Nov. 2024)

3. **Only** in case of a very deep occlusion, block the lower joint (arrow) of the Occluform-3. This leads to more free moving space of the lower jaw on the articulation surface.

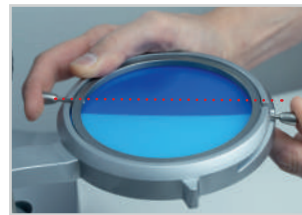
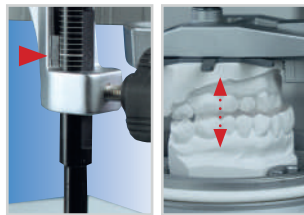


4. Articulate the models in the Occluform-3 with or without construction bite with opened joint.

Tightly close the joint (arrow).

Adjust the supporting pin to 0-position (illustration).

5. Without construction bite lift the bite for 4-5, triple-light for 3-4 scale marks. Open the Occluform-3.

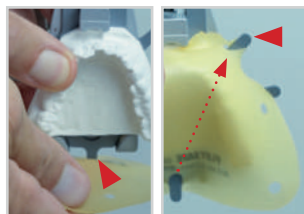


6. 2-4 coloured foils are oriented towards the inserting slots of the foil securing ring.

Enter foil type and confirm, swivel foil under the heating, the heating process starts.

Insert the Playsafe triple foil, thereby the insulating foil faces to the model (ill. 6).

7. Hang in **two** Playsafe bite spacers, one after the other, in the Playsafe face chuck (imprint faces to the model). In doing so hold the model and the model plate firmly and hang in first at the back, then at the front etc.



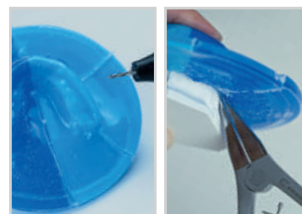
8. Thermoform, **Attention! Close the Occluform-3 only after one minute cooling time until the supporting pin gets contact.** Hold in this position only for a short time ...

9. Wait for the **entire** cooling time and **only then** open the Occluform-3 again.



10. Then lift the foil reception with the model pot, support it with one hand and ...

11. ... open the foil securing ring and remove the foil with the model pot through the foil reception.

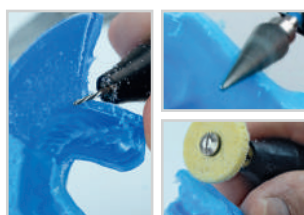


12. Cut in relief cuts using the fissure bur (>20.000 rpm).

Take the foil with the take-off pliers (110 880) off the model.

Release model in the model pot and remove it.

13. Cut out the Playsafe triple with the fissure bur* and grind out the edge shape with the tungsten carbide bur* (* > 20.000 rpm).

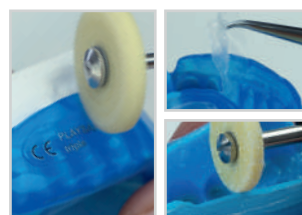


14. Cut out the label and place the sports mouthguard back on the model for fixing.

Heat the label area carefully with the hot air burner.

Smooth with Liskosil-I resp. at narrow spaces with Liskosil-m/-s (max. 10.000 rev/min).

15. Put the label on top, **attention**, it cannot be removed anymore.



16. Allow to cool down and smooth it with Liskosil-I or -m (max. 10.000 rev/min).

Take it off the model, remove the insulating foil and slightly break and smooth the vestibular inner edge with Liskosil.

Press on the label with the FG sheet.

If necessary, heat the edge of the label again and press it on with the FG sheet.

17. Shine the Playsafe triple on the model with the hot air burner.



18. If required, shape hot areas with an FG-foil. **Finished.**