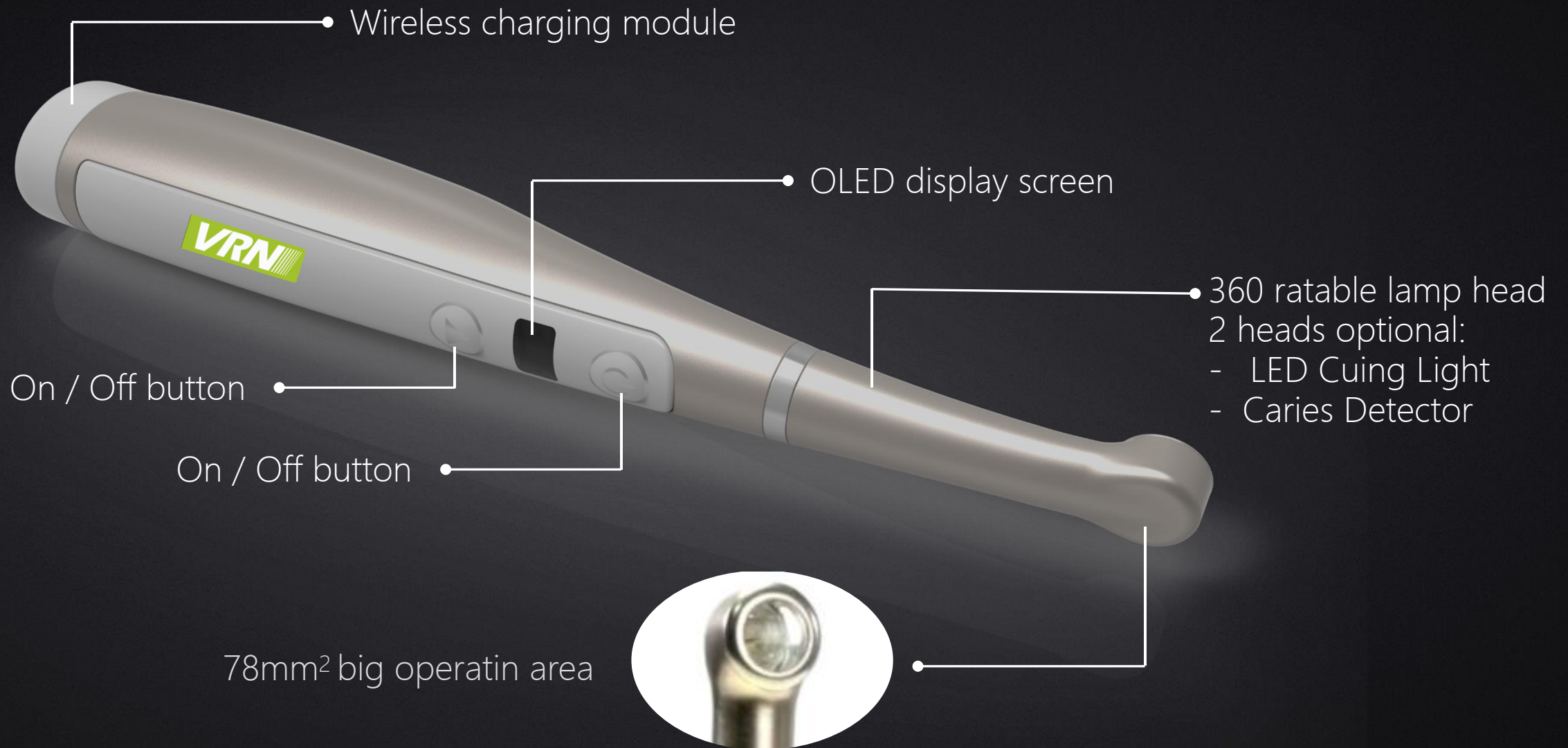


|| New Generation Curing Light

VAFU

|| by VRN





Wireless charging module

OLED display screen

360 rotatable lamp head
2 heads optional:
- LED Cuing Light
- Caries Detector

On / Off button

On / Off button

78mm² big operatin area

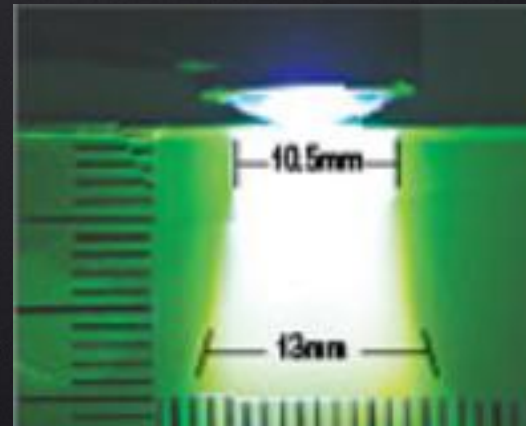
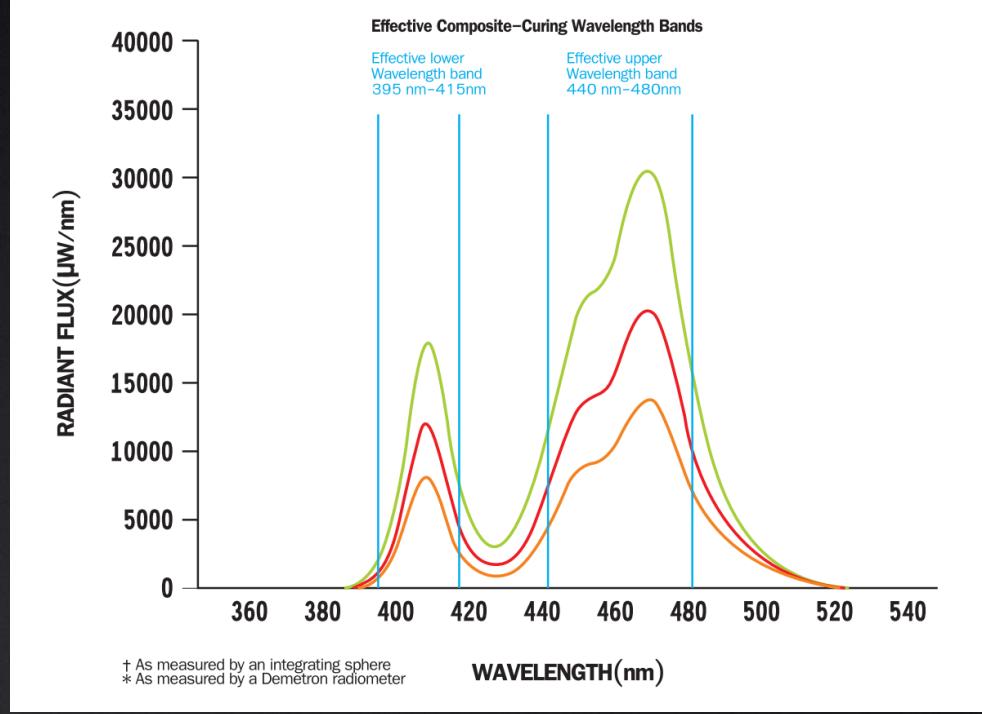
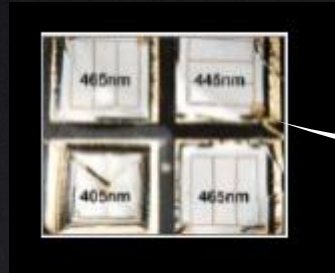


Wireless Charging Base

True wireless charging, comply with international Qi protocol



- 10W high power LED × 4
- Wide Spectrum
385nm-515nm



Parallel light output, maximum depth 13mm

Multiple functions expansion



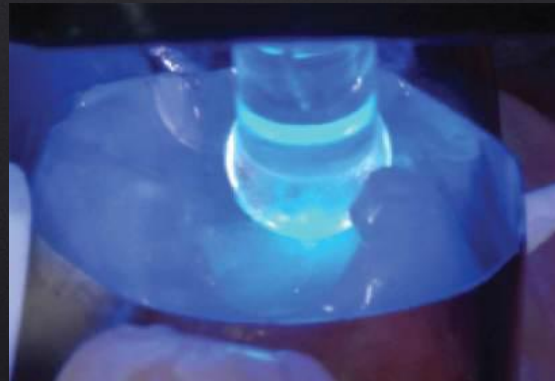
Point Cure Lens



For pinpoint curing of small composites or tack curing veneers.



Proxi Cure Ball Lens

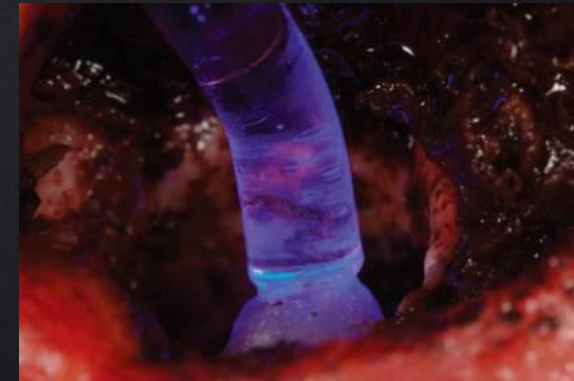


For building convex proximal contacts.

<https://stomshop.pro>



Endo Guide Lens

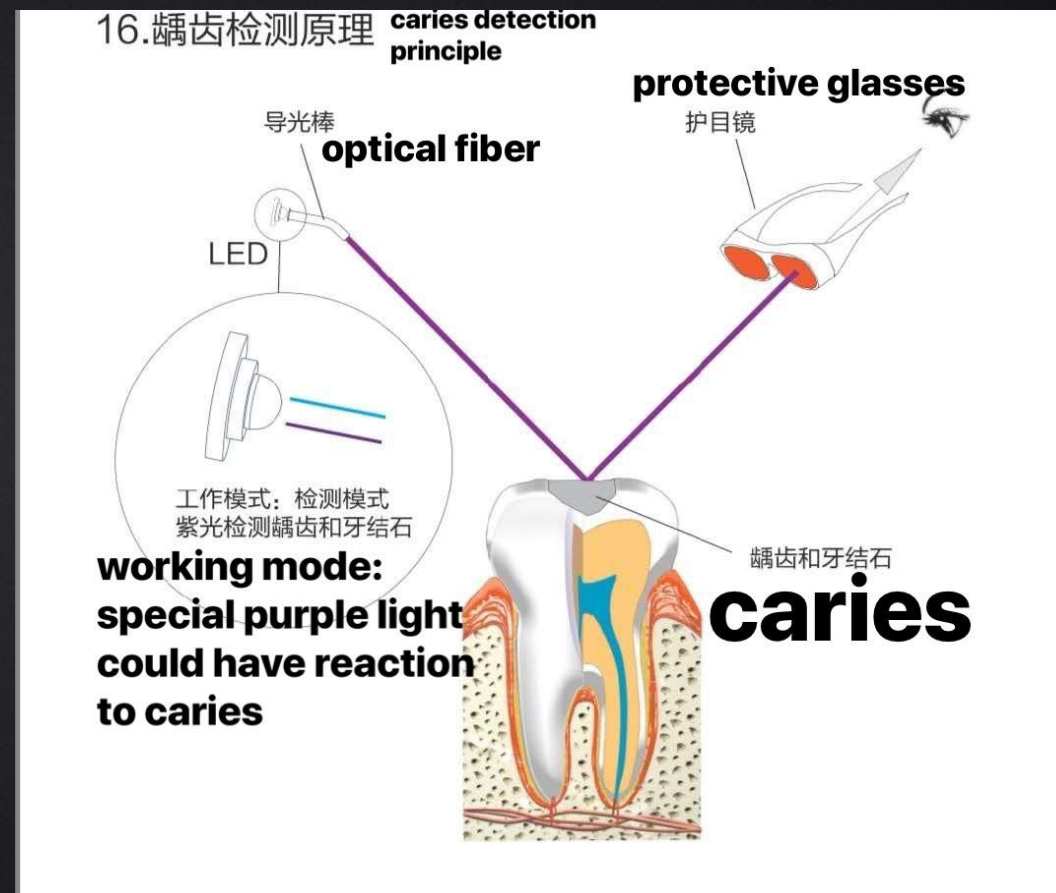


For endodontic procedures, including apical retrofills and other cases where a narrow light guide is needed.

Caries Detector Function



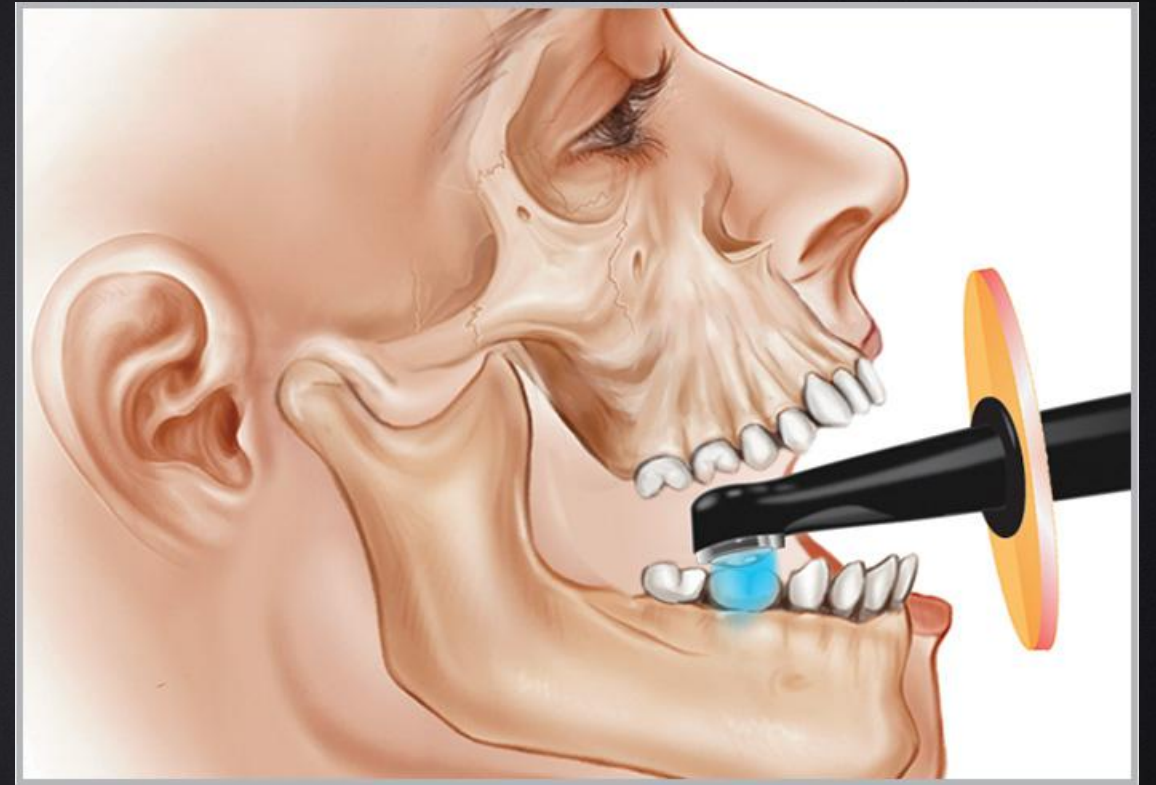
Red fluorescence for caries
And your check-up becomes a mere "thumbs up"



Lamp head height 11.8 mm, thinnest head
Mouth opening angle only 11°

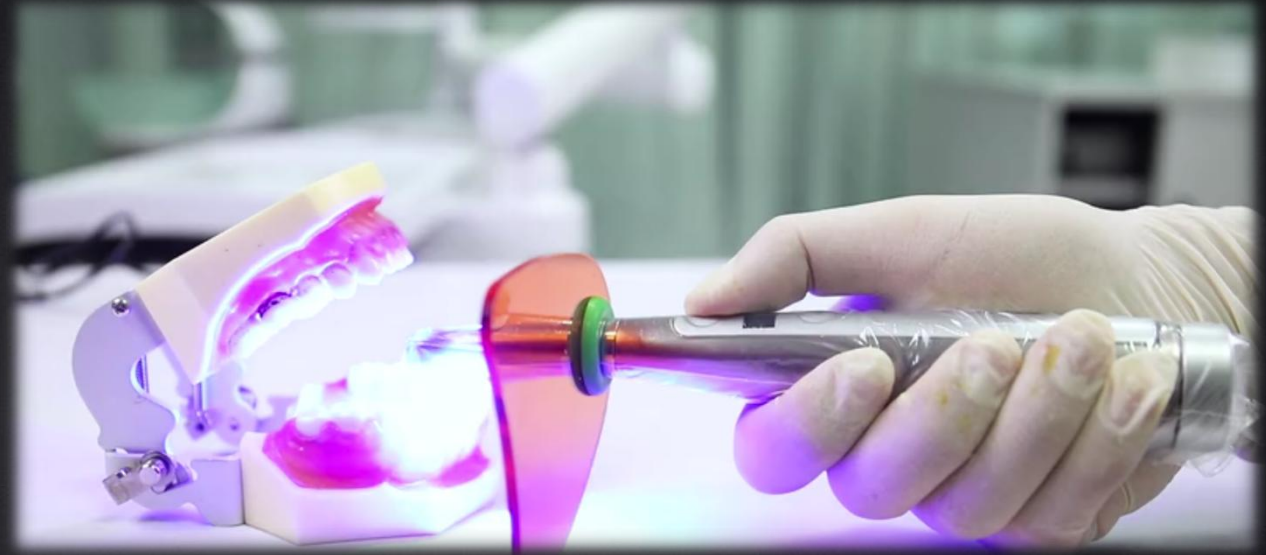


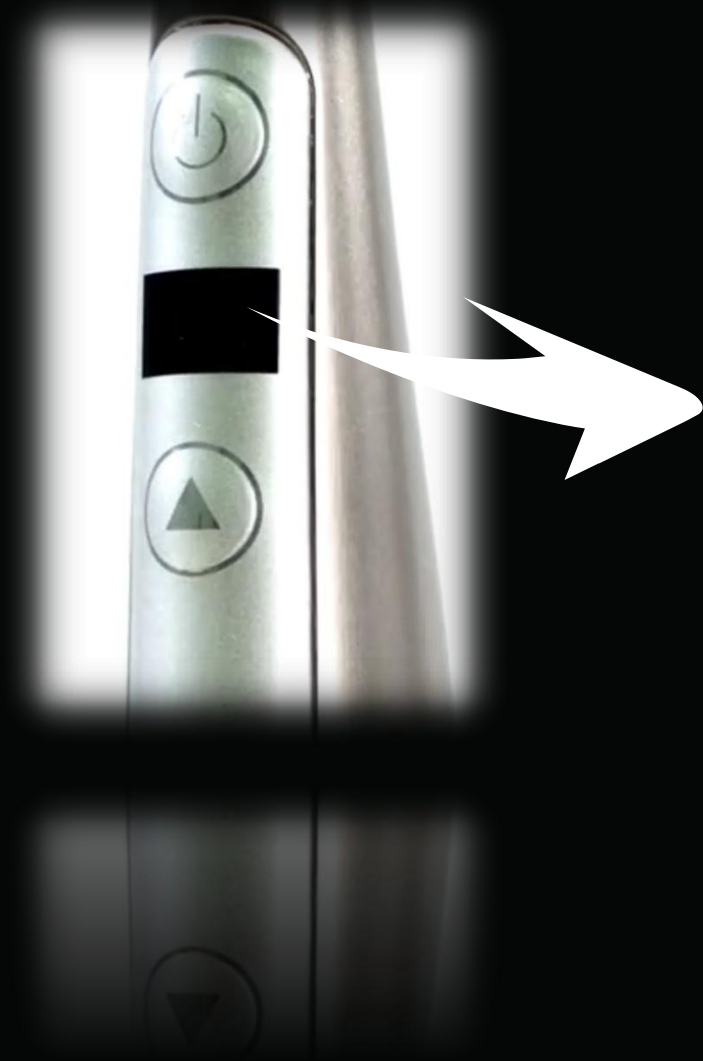
Traditional curing light



VRN VAFU curing light

- 3 working models:
full power, progressing, pause ;
- 3 power levels:
P1 – Ultra power, 3200 mW/cm²
P2 – high power, 2400 mW/cm²
P3 – standard power, 1600 mW/cm²
- 3 point curing lens:
Point Cure Lens,
Proxi Cure Ball Lens,
Endo Guide Lens
- Constant light power out put, won' t be effected by battery capacity.
- 2 lamp heads optional:
LED Curing Light
Caries Detector, purple light helps to see invisible caries and plaque





• Battery capacity

• Working mode

• Power level

• Working time

电源适配器

Adaptor



说明书

User's Manual



Point Cure Lens

点固化头

Proxi Cure Ball Lens

球头导光头

充电座

Charging base



Lamp head

光源头

Main body

主机



Light Shield

遮光片



根管导光头

Endo Guide Lens

COMPARATION

Model	VAFU (VRN)	VALO (ULTRAENT)	ILED (WOODPECKER)
Dimension	33mm×27mm×206mm	33mm×27mm×203mm	25×25×240mm
Weight	160g	170g	278g
Body Material	Aluminum body + IML panel	Aluminum body	Plastic (ABS)
Battery	2200mA 3.7V	RCR123A 3.2V 750mA × 2	1400mA 3.7V
Display	OLED	LEDs	Digital tube
Power Level	3 levels, P1 P2 P3	3 levels, P1 P2 P3	2 levels
Working Mode	3 modes: full power, progressing, pause	1 mode	1 mode
Wireles Charging	Yes, QI WPC V1.1 wireless protocol	No, needs special charging seat	No, DC charging



COMPARATION

Model	VAFU (VRN)	VALO (ULTRAENT)	ILED (WOODPECKER)
Light Power	P1: 3200, P2: 2400, P1: 1600	P1: 3200, P2: 2400, P1: 1600	P1: 2800, P2: 1400
Operation Area	78mm ²	78.5mm ²	50mm ²
Lens Height	11.8 mm	11.4 mm	14 mm
Battery Indicator	Yes	No	No
Low Battery Warning	Yes	Yes	Yes
Light Meter	Yes	No	No
360 rotatable lamp	Yes	No	Yes
Spot Curing Lens	Yes	Yes	No
Caries Detector	Yes	Yes	



Curing Test

VAFU / P1 / 1 sec

Sample	Depth (mm)	Average
1	3.49	3.527
2	3.62	3.600
		3.564

iLed / P1 / 1sec

1	3.38	3.403
2	3.42	3.423
		3.413

VALO / Xtra Power / 1 sec

1	3.49	3.477
2	3.63	3.653
		3.565

