

KaVo Scan eXam™ One

Quick guide Scan eXam™ One

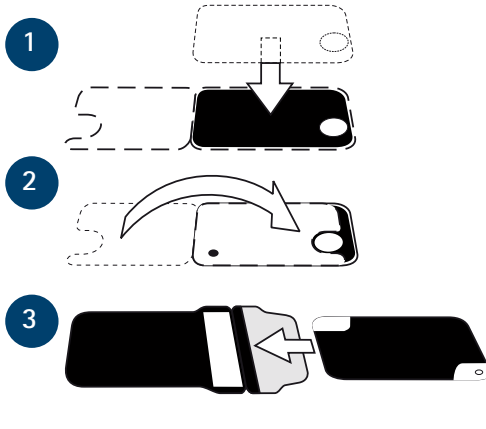
Imaging plate handling, Image capturing, Installation



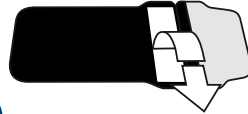
KaVo. Dental Excellence.

KaVo Scan eXam™ One – Imaging plate packing & handling

1



4



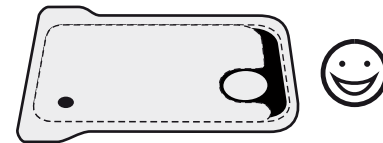
5



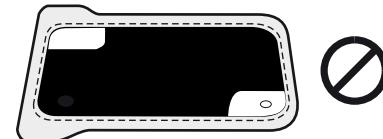
6



2

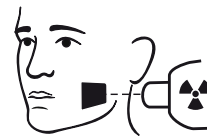
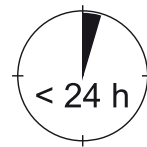
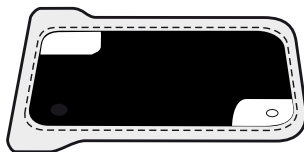


Right orientation



False orientation

3



Store the imaging plate max 24 hours packed before the exposure.

4



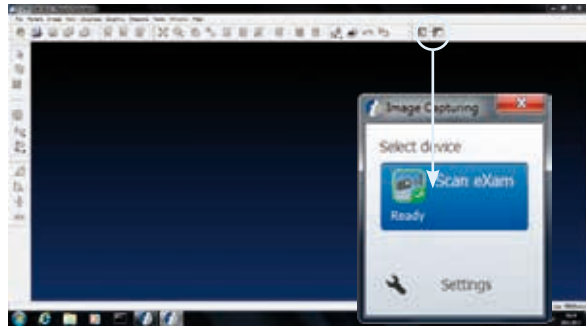
INSTRUCTIONS



KaVo. Dental Excellence.

KaVo Scan eXam™ One – Image capturing

1



Make sure the right patient is selected.

Activate the Scan eXam™ One unit by pressing the Device button in the Image Capturing window if it is not in the ready-state.



READY

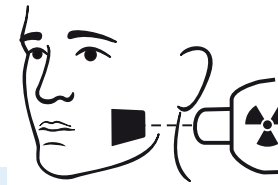


AVAILABLE



DISCONNECTED

2

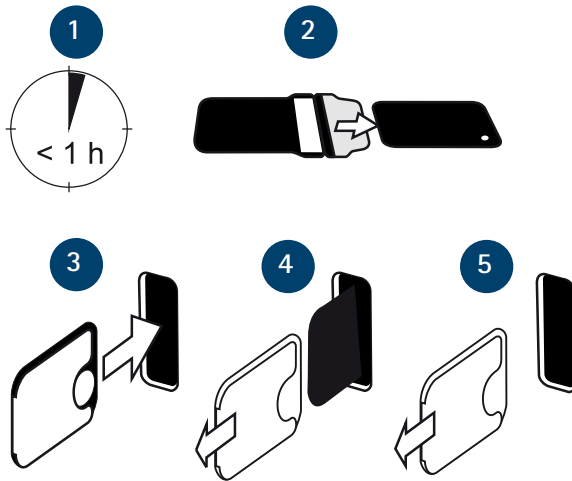


Exposure time (s)	7mA kV				
229mm (9") SSD DC	60	0,12 0,20	0,16 0,25	0,16 0,32	0,16 0,25
	70	0,06 0,10	0,08 0,12	0,08 0,16	0,08 0,12
305mm (12") SSD DC	60	0,25 0,40	0,32 0,50	0,32 0,63	0,32 0,50
	70	0,12 0,20	0,16 0,25	0,16 0,32	0,16 0,25

~AC +30%

Position and exposure.

3



Process max 1 hour from exposure.

Remove the plastic hygiene bag.

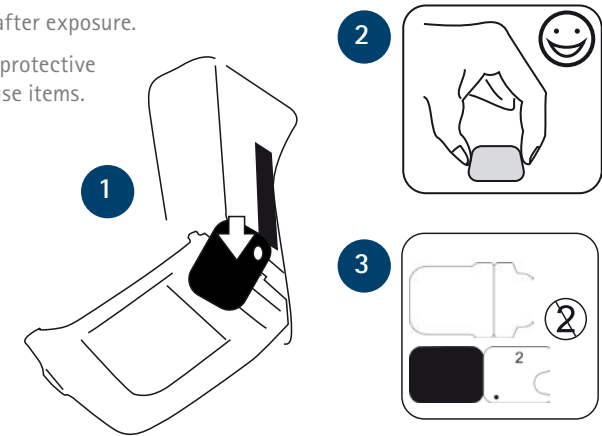
Feed the imaging plate carefully into the unit with protective cover.

4

Imaging plate is ready for reuse.

Handle with care after exposure.

Hygiene bags and protective covers are single use items.

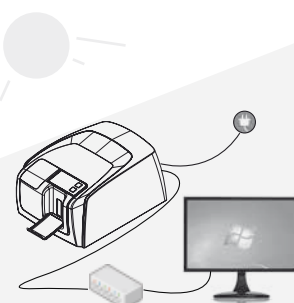


KaVo. Dental Excellence.

KaVo Scan eXam™ One – Installation

Mat.-Nr 209439-1 07/13 en We reserve the right to make technical modifications. Slight colour differences are due to the printing process. © Copyright KaVo Dental GmbH.

1



Connect the cables.
Switch the unit on.
Do not position the system in direct sunlight.

2

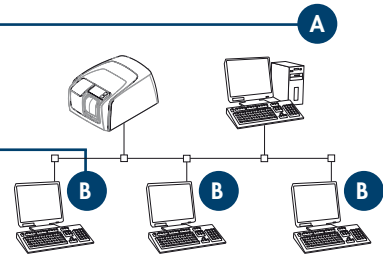


Insert the software installation media (DVD) and launch the software installer if it does not start automatically.

3

Please select the feature that you want to install

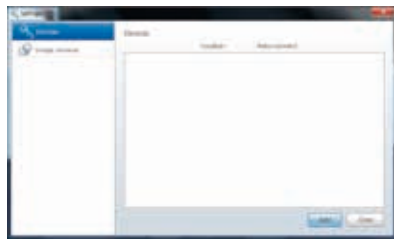
- CLINVIEW Quick Install
Standalone or small network server
No Volumetric Tomography or DICOM features.
- CLINVIEW Network Client
Client without database
No Volumetric Tomography or DICOM features.
- CLINVIEW Advanced
Standalone or small network server
Includes Volumetric Tomography and DICOM features.
- CLINVIEW Manuals



A always needed, B optional


Select a correct setup.

4



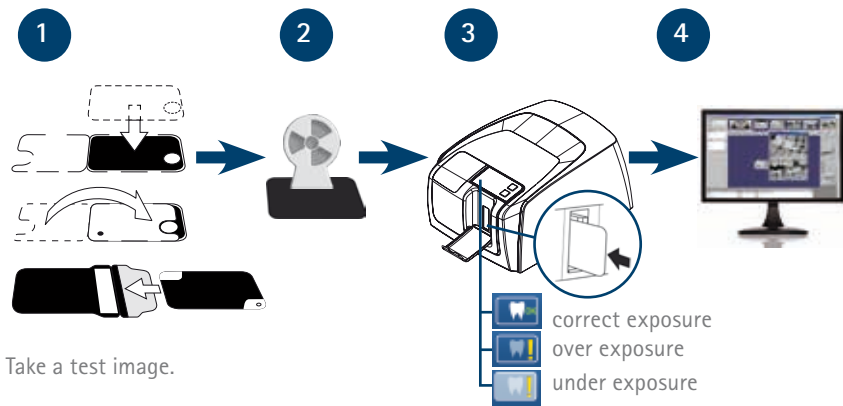
Configure the devices with the Add Device Wizard.
If the Wizard does not open automatically press Setup on the image capture window.

5



Select the desired device from the list and press Finish.

6



Take a test image.

- correct exposure
- over exposure
- under exposure



KaVo. Dental Excellence.