



KO-MAX

Value for the Future

Silence

CADCAM dust collector
Dust collector

Silence



CERTIFICATIONS





KO-MAX History

Ko-max Co.,Ltd. a specialized suction instrument development and manufacturing firm founded in 2014, makes every endeavor to produce a suction instrument of powerful sucking force, low noise and convenient UI.

Beginning export to japan in 2016 gaining its world class performance and quality, it is securing a global network through aggressive export. Accordingly, Ko-max was awarded with a One-Million-Dollar Export Monument Award from S. Korean President Moon Jae-in, in 2017 and in 2020, komax achieved more than 3 million dollars in exports. .

Ko-max desires people throughout the world open a better future through our products. We will be more industrious to get trust keeping to a principle.



Grinding box & LED light



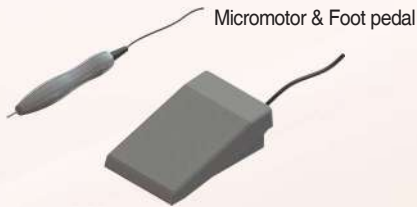
Grinding box & 700mm Flexible hose



Transparency shield



Grinding box & 1500mm Flexible hose



Micromotor & Foot pedal



Hood suction hose



Arm rest

Mobile workstation with Hood suction hose (Micromotor type)

Silence -M10

Specifications

- Power supply : Single phase AC220V-240V, 50/60Hz
Single phase AC100V-120V, 50/60Hz
- Motor's RPM : 32,000RPM
- Air pressure (Kpa) : 23.7Kpa (230V) / 25.2Kpa (120V)
- Air flow (L/min) : 3750L/min (230V) / 3660L/min (120V)
- Body Materials : ABS, PP, PETG
- Output power : 1251W (230V) / 1247W (120V)
- Current : 5.2A (230V) / 10A (120V)
- Control panel : Suction level display, filter alarm, Vacuum motor
Micromotor control display
- 1st Filter : Pocket filter
- 2nd Filter : Filter Bracket
- 3rd Filter : ULPA filter (99.9995%)
- 4th Filter : Carbon filter
- 5th filter : Cleaning filter
- 6th Filter : Air filter
- Medical casters with stopper
- Noise level : MAX.55dB
- Suction level : 1-9 step
- Motor operating temperature : 0-40°C
- Dimensions (Body) : 295mm (W) x 330mm (D) x 790mm (H)
(Height to handle)
- Micromotor : Max. 35,000 RPM, 40W, Hand & Foot function,
FWD & REV direction.
- Filter replacement (cleaning) alarm by the pneumatic sensor

Component

- Main body
- Power plug
- Suction hose with O cap

Optional Acc'y

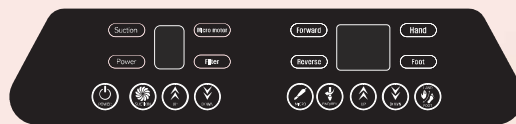
- Pocket filter
- Micromotor & Foot pedal
- L cap
- U cap



Dust Collector



Micromotor & Foot pedal
(Option)



Touchpad



1st Pocket filter



2nd Filter Bracket



3rd ULPA filter
(U15 / 99.9995%)



4th Carbon filter



5th Air filter



1st HEPA filter
(Option)

Mobile workstation with LED Grinding box



Silence -20

Specification

- Power supply: Single phase AC220V-240V, 50/60Hz
Single phase AC100V-120V, 50/60Hz
- Motor's RPM : 32,000RPM
- Air pressure (Kpa) : 23.7Kpa (230V) / 25.2Kpa (120V)
- Air flow (L/min) : 3750L/min (230V) / 3660L/min (120V)
- Body Materials : ABS, PP, PC
- Output power : 1251W (230V) / 1247W (120V)
- Current : 5.2A (230V) / 10A (120V)
- Control panel : Suction level display, filter alarm, Vacuum motor
- 1st Filter : Pocket filter
- 2nd Filter : Filter Bracket
- 3rd Filter : ULPA filter (99.9995%)
- 4th Filter : Carbon filter
- 5th filter : Cleaning filter
- 6th Filter : Air filter
- Medical casters with stopper
- Noise level : MAX.55dB
- Suction level : 1-9 step
- Motor operating temperature : 0-40°C
- Dimensions (Body) : 295mm (W) x 330mm (D) x 750mm (H)
(Height to the top of the device body)
- This device can be linked with a micromotor controller.
- Filter replacement (cleaning) alarm by the pneumatic sensor

Component

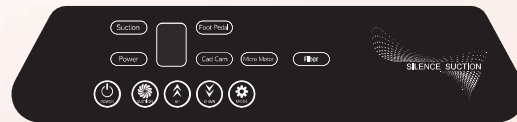
- Main body
- Power plug
- Grinding box with LED light

Optional Acc'y

- Pocket filter
- Foot switch (For suction on/off)



Dust Collector



Touchpad



1st Pocket filter



2nd Filter Bracket



3rd ULPA filter
(U15 / 99.9995%)



4th Carbon filter



5th Air filter



1st HEPA filter
(Option)

Mobile workstation with LED Grinding box (Micromotor type)



Silence -M20

Specification

- Power supply : Single phase AC220V-240V, 50/60Hz
Single phase AC100V-120V, 50/60Hz
- Motor's RPM : 32,000RPM
- Air pressure (Kpa) : 23.7Kpa (230V) / 25.2Kpa (120V)
- Air flow (L/min) : 3750L/min (230V) / 3660L/min (120V)
- Body Materials : ABS, PP, PC
- Output power : 1251W (230V) / 1247W (120V)
- Current : 5.2A (230V) / 10A (120V)
- Control panel : Suction level display, filter alarm, Vacuum motor
Micromotor control display
- 1st Filter : Pocket filter
- 2nd Filter : Filter Bracket
- 3rd Filter : ULPA filter (99.9995%)
- 4th Filter : Carbon filter
- 5th filter : Cleaning filter
- 6th Filter : Air filter
- Medical casters with stopper
- Noise level : MAX.55dB
- Suction level : 1-9 step
- Motor operating temperature : 0-40 °C
- Dimensions (Body) : 295mm (W) x 330mm (D) x 750mm (H)
(Height to the top of the device body)
- Micromotor : Max. 35,000 RPM, 40W, Hand & Foot function,
FWD & REV direction.
- Filter replacement (cleaning) alarm by the pneumatic sensor

Component

- Main body
- Power plug
- Grinding box with LED light

Optional Acc'y

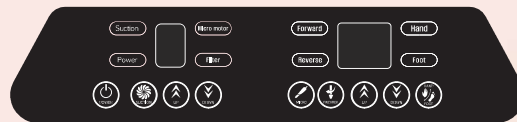
- Pocket filter
- Micromotor & Foot pedal



Dust Collector



Micromotor & Foot pedal
(Option)



Touchpad



1st Pocket filter



2nd Filter Bracket



3rd ULPA filter
(U15 / 99.9995%)



4th Carbon filter



5th Air filter



1st HEPA filter
(Option)

Mobile workstation with LED Grinding box & 700mm Flexible hose



Silence - 40

Specification

- Power supply : Single phase AC220V-240V, 50/60Hz
Single phase AC100V-120V, 50/60Hz
- Motor's RPM : 32,000RPM
- Air pressure (Kpa) : 23.7Kpa (230V) / 25.2Kpa (120V)
- Air flow (L/min) : 3750L/min (230V) / 3660L/min (120V)
- Body Materials : ABS, PP, PC
- Output power : 1251W (230V) / 1247W (120V)
- Current : 5.2A (230V) / 10A (120V)
- Control panel : Suction level display, filter alarm, Vacuum motor
- 1st Filter : Pocket filter
- 2nd Filter : Filter Bracket
- 3rd Filter : ULPA filter (99.9995%)
- 4th Filter : Carbon filter
- 5th filter : Cleaning filter
- 6th Filter : Air filter
- Medical casters with stopper
- Noise level : MAX.55dB
- Suction level : 1-9 step
- Motor operating temperature : 0-40 °C
- Dimensions (Body) : 295mm (W) x 330mm (D) x 750mm (H)
(Height to the top of the device body)
- This device can be linked with a micromotor controller.
- Filter replacement (cleaning) alarm by the pneumatic sensor

Component

- Main body
- Power plug
- Grinding box with LED light
- 700mm Flexible hose

Optional Acc'y

- Pocket filter
- Foot switch (For suction on/off)



Dust Collector



Touchpad



1st Pocket filter



2nd Filter Bracket



3rd ULPA filter
(U15 / 99,9995%)



4th Carbon filter



5th Air filter



1st HEPA filter
(Option)

Mobile workstation with LED Grinding box & 700mm Flexible hose (Micro motor type)



Silence - M40

Specification

- Power supply: Single phase AC220V-240V, 50/60Hz
Single phase AC100V-120V, 50/60Hz
- Motor's RPM : 32,000RPM
- Air pressure (Kpa) : 23.7Kpa (230V) / 25.2Kpa (120V)
- Air flow (L/min) : 3750L/min (230V) / 3660L/min (120V)
- Body Materials : ABS, PP, PC
- Output power : 1251W (230V) / 1247W (120V)
- Current : 5.2A (230V) / 10A (120V)
- Control panel : Suction level display, filter alarm, Vacuum motor
Micromotor control display
- 1st Filter : Pocket filter
- 2nd Filter : Filter Bracket
- 3rd Filter : ULPA filter (99.9995%)
- 4th Filter : Carbon filter
- 5th filter : Cleaning filter
- 6th Filter : Air filter
- Medical casters with stopper
- Noise level : MAX.55dB
- Suction level : 1-9 step
- Motor operating temperature : 0-40 °C
- Dimensions (Body) : 295mm (W) x 330mm (D) x 750mm (H)
(Height to the top of the device body)
- Micromotor : Max. 35,000 RPM, 40W, Hand & Foot function,
FWD & REV direction.
- Filter replacement (cleaning) alarm by the pneumatic sensor

Component

- Main body
- Power plug
- Grinding box with LED light
- 700mm Flexible hose

Optional Acc'y

- Pocket filter
- Micromotor & Foot pedal



Dust Collector



Micromotor & Foot pedal
(Option)



Touchpad



1st Pocket filter



2nd Filter Bracket



3rd ULPA filter
(U15 / 99.9995%)



4th Carbon filter



5th Air filter



1st HEPA filter
(Option)

Mobile workstation with LED Grinding box & Arm rest



Silence - 50

Specification

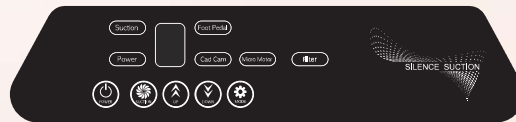
- Power supply: Single phase AC220V-240V, 50/60Hz
Single phase AC100V-120V, 50/60Hz
- Motor's RPM : 32,000RPM
- Air pressure (Kpa) : 23.7Kpa (230V) / 25.2Kpa (120V)
- Air flow (L/min) : 3750L/min (230V) / 3660L/min (120V)
- Body Materials : ABS, PP, PC
- Output power : 1251W (230V) / 1247W (120V)
- Current : 5.2A (230V) / 10A (120V)
- Control panel : Suction level display, filter alarm, Vacuum motor
- 1st Filter : Medium filter
- 2nd Filter : ULPA filter (99.9995%)
- 3rd Filter : Carbon filter
- 4th filter : Cleaning filter
- 5th Filter : Air filter
- Medical casters with stopper
- Noise level : MAX.55dB
- Suction level : 1-9 step
- Motor operating temperature : 0-40°C
- Dimensions (Body) : 295mm (W) x 330mm (D) x 750mm (H)
(Height to the top of the device body)
- This device can be linked with a micromotor controller.
- Filter replacement (cleaning) alarm by the pneumatic sensor

Component

- Main body
- Power plug
- Grinding box with LED light
- Arm rest

Optional Acc'y

- Pocket filter
- Foot switch (For suction on/off)



Touchpad



Dust Collector



1st Pocket filter



2nd Filter Bracket



3rd ULPA filter
(U15 / 99.9995%)



4th Carbon filter



5th Air filter

1st HEPA filter
(Option)

Mobile workstation with LED Grinding box & Arm rest (Micromotor type)



Silence -K3

Specification

- Power supply: Single phase AC220V-240V, 50/60Hz
Single phase AC100V-120V, 50/60Hz
- Motor's RPM : 32,000RPM
- Air pressure (Kpa) : 23.7Kpa (230V) / 25.2Kpa (120V)
- Air flow (L/min) : 3750L/min (230V) / 3660L/min (120V)
- Body Materials : ABS, PP, PC
- Output power : 1251W (230V) / 1247W (120V)
- Current : 5.2A (230V) / 10A (120V)
- Control panel : Suction level display, filter alarm, Vacuum motor
Micromotor control display
- 1st Filter : Medium filter
- 2nd Filter : ULPA filter (99.9995%)
- 3rd Filter : Carbon filter
- 4th filter : Cleaning filter
- 5th Filter : Air filter
- Medical casters with stopper
- Noise level : MAX.55dB
- Suction level : 1-9 step
- Motor operating temperature : 0-40°C
- Dimensions (Body) : 295mm (W) x 330mm (D) x 750mm (H)
(Height to the top of the device body)
- Micromotor : Max. 35,000 RPM, 40W, Hand & Foot function,
FWD & REV direction.
- Filter replacement (cleaning) alarm by the pneumatic sensor

Component

- Main body
- Power plug
- Grinding box with LED light
- Arm rest

Optional Acc'y

- Pocket filter
- Micromotor & Foot pedal



Dust Collector



Micromotor & Foot pedal
(Option)



Touchpad



1st Pocket filter



2nd Filter Bracket



3rd ULPA filter
(U15 / 99.9995%)



4th Carbon filter



5th Air filter



1st HEPA filter
(Option)

Mobile workstation with Transparency shield



Silence - 60

Specification

- Power supply: Single phase AC220V-240V, 50/60Hz
Single phase AC100V-120V, 50/60Hz
- Motor's RPM : 32,000RPM
- Air pressure (Kpa) : 23.7Kpa (230V) / 25.2Kpa (120V)
- Air flow (L/min) : 3750L/min (230V) / 3660L/min (120V)
- Body Materials : ABS, PP, PC
- Output power : 1251W (230V) / 1247W (120V)
- Current : 5.2A (230V) / 10A (120V)
- Control panel : Suction level display, filter alarm, Vacuum motor
- 1st Filter : Medium filter
- 2nd Filter : ULPA filter (99.9995%)
- 3rd Filter : Carbon filter
- 4th filter : Cleaning filter
- 5th Filter : Air filter
- Medical casters with stopper
- Noise level : MAX.55dB
- Suction level : 1-9 step
- Motor operating temperature : 0-40 °C
- Dimensions (Body) : 295mm (W) x 330mm (D) x 750mm (H)
(Height to the top of the device body)
- This device can be linked with a micromotor controller.
- Filter replacement (cleaning) alarm by the pneumatic sensor

Component

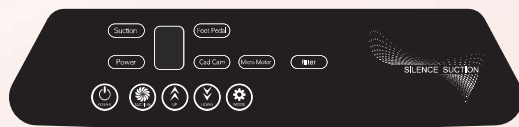
- Main body
- Power plug
- Transparency shield

Optional Acc'y

- Pocket filter
- Foot switch (For suction on/off)



Dust Collector



Touchpad



1st Pocket filter



2nd Filter Bracket



3rd ULPA filter
(U15 / 99,9995%)



4th Carbon filter



5th Air filter



1st HEPA filter
(Option)

Mobile workstation with Transparency shield (Micromotor type)



Silence - M60

Specification

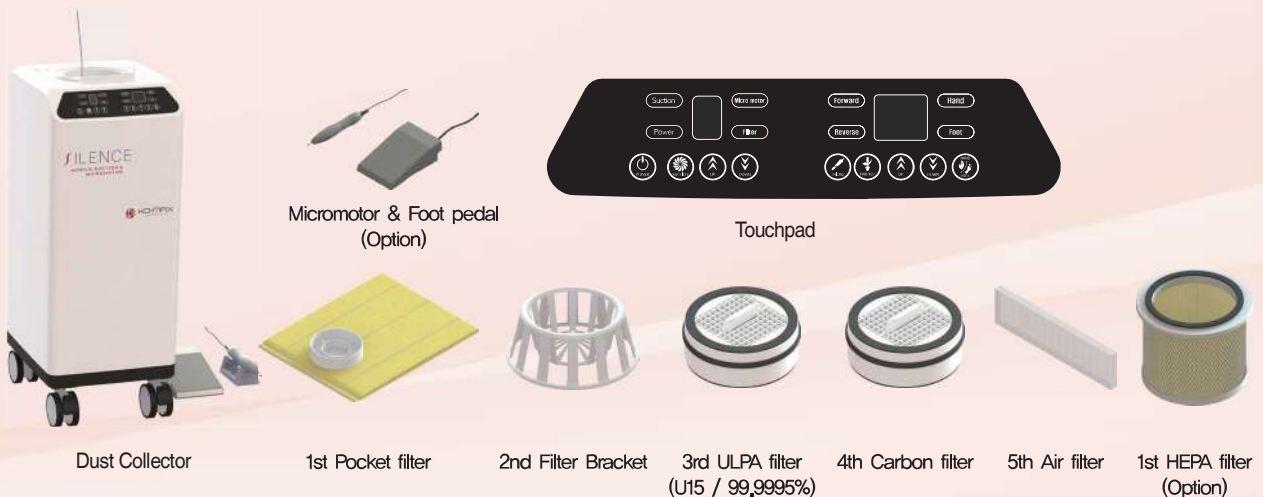
- Power supply: Single phase AC220V-240V, 50/60Hz
Single phase AC100V-120V, 50/60Hz
- Motor's RPM : 32,000RPM
- Air pressure (Kpa) : 23.7Kpa (230V) / 25.2Kpa (120V)
- Air flow (L/min) : 3750L/min (230V) / 3660L/min (120V)
- Body Materials : ABS, PP, PC
- Output power : 1251W (230V) / 1247W (120V)
- Current : 5.2A (230V) / 10A (120V)
- Control panel : Suction level display, filter alarm, Vacuum motor
Micromotor control display
- 1st Filter : Medium filter
- 2nd Filter : ULPA filter (99.9995%)
- 3rd Filter : Carbon filter
- 4th filter : Cleaning filter
- 5th Filter : Air filter
- Medical casters with stopper
- Noise level : MAX.55dB
- Suction level : 1-9 step
- Motor operating temperature : 0-40 °C
- Dimensions (Body) : 295mm (W) x 330mm (D) x 750mm (H)
(Height to the top of the device body)
- Micromotor : Max. 35,000 RPM, 40W, Hand & Foot function,
FWD & REV direction.
- Filter replacement (cleaning) alarm by the pneumatic sensor

Component

- Main body
- Power plug
- Transparency shield

Optional Acc'y

- Pocket filter
- Micromotor & Foot pedal



Dust Collector

Micromotor & Foot pedal
(Option)

Touchpad

1st Pocket filter

2nd Filter Bracket

3rd ULPA filter
(U15 / 99.9995%)

4th Carbon filter

5th Air filter

1st HEPA filter
(Option)

Mobile workstation with LED Grinding box & 1500mm Flexible hose

Silence -70

Specifications

- Power supply: Single phase AC220V-240V, 50/60Hz
Single phase AC100V-120V, 50/60Hz
- Motor's RPM : 32,000RPM
- Air pressure (Kpa) : 23.7Kpa (230V) / 25.2Kpa (120V)
- Air flow (L/min) : 3750L/min (230V) / 3660L/min (120V)
- Body Materials : ABS, PP, PC
- Output power : 1251W (230V) / 1247W (120V)
- Current : 5.2A (230V) / 10A (120V)
- Control panel : Suction level display, filter alarm, Vacuum motor
- 1st Filter : Medium filter
- 2nd Filter : ULPA filter (99.9995%)
- 3rd Filter : Carbon filter
- 4th filter : Cleaning filter
- 5th Filter : Air filter
- Medical casters with stopper
- Noise level : MAX.55dB
- Suction level : 1-9 step
- Motor operating temperature : 0-40°C
- Dimensions (Body) : 295mm (W) x 330mm (D) x 790mm (H)
(Height to handle)
- This device can be linked with a micromotor controller.
- Filter replacement (cleaning) alarm by the pneumatic sensor

Component

- Main body
- Power plug
- LED Grinding box + Adapter
- 1500mm Flexible hose

Optional Acc'y

- Pocket filter
- Table
- Foot switch (For suction on/off)



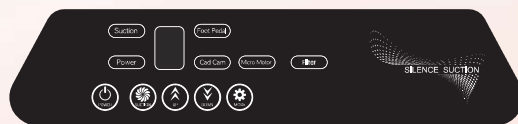
Grinding box & LED light



1500mm Flexible hose



Dust collector



Touchpad



1st Pocket filter



2nd Filter Bracket



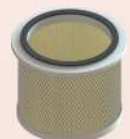
3rd ULPA filter (U15 / 99.9995%)



4th Carbon filter



5th Air filter



1st HEPA filter (Option)

Mobile workstation with LED Grinding box & 1500mm Flexible hose (Micromotor type)

Silence - M70

Specification

- Power supply: Single phase AC220V-240V, 50/60Hz
Single phase AC100V-120V, 50/60Hz
- Motor's RPM : 32,000RPM
- Air pressure (Kpa) : 23.7Kpa (230V) / 25.2Kpa (120V)
- Air flow (L/min) : 3750L/min (230V) / 3660L/min (120V)
- Body Materials : ABS, PP, PC
- Output power : 1251W (230V) / 1247W (120V)
- Current : 5.2A (230V) / 10A (120V)
- Control panel : Suction level display, filter alarm, Vacuum motor
Micromotor control display
- 1st Filter : Medium filter
- 2nd Filter : ULPA filter (99.9995%)
- 3rd Filter : Carbon filter
- 4th filter : Cleaning filter
- 5th Filter : Air filter
- Medical casters with stopper
- Noise level : MAX.55dB
- Suction level : 1-9 step
- Motor operating temperature : 0-40 °C
- Dimensions (Body) : 295mm (W) x 330mm (D) x 790mm (H)
(Height to handle)
- Micromotor : Max. 35,000 RPM, 40W, Hand & Foot function,
FWD & REV direction.
- Filter replacement (cleaning) alarm by the pneumatic sensor

Component

- Main body
- Power plug
- LED Grinding box + Adapter
- 1500mm Flexible hose

Optional Acc'y

- Pocket filter
- Micromotor & Foot pedal
- Table



Grinding box & LED light



1500mm Flexible hose



Dust collector



Micromotor & Foot pedal
(Option)



Touchpad



1st Pocket filter



2nd Filter Bracket



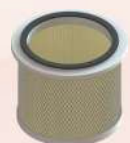
3rd ULPA filter
(U15 / 99,9995%)



4th Carbon filter



5th Air filter

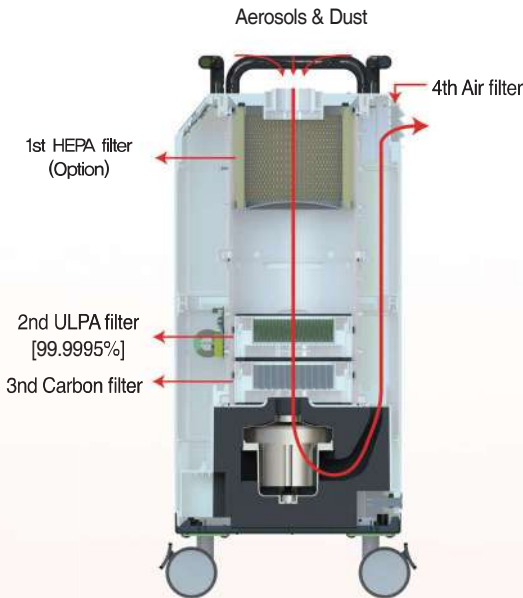


1st HEPA filter
(Option)

Cross-section of Mobile workstation dust collector

Silence principle

Mobile workstation (1st Circle filter)

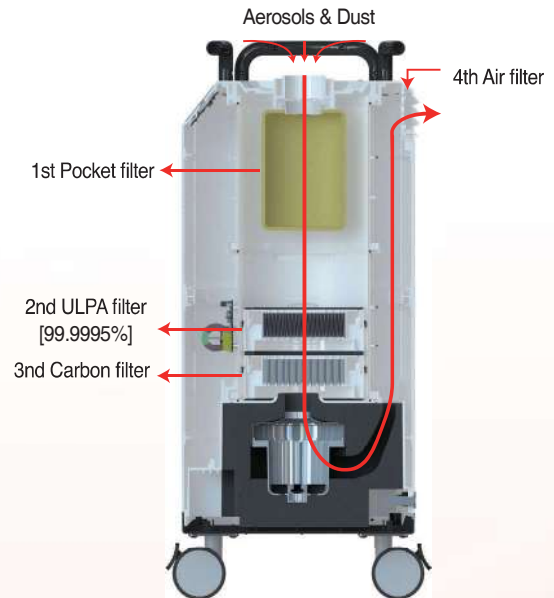


[Cross-section]



For indoor exhaust

Mobile workstation (1st Pocket filter)



[Cross-section]

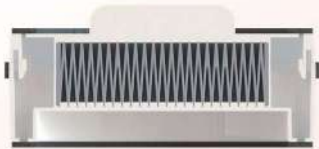


For outdoor exhaust

Cross-section of Mobile workstation filters



1st Pocket filter



2nd ULPA filter (99.9995%), Replacement : every 1 year



3rd Carbon filter, Replacement : every 1 year



4th Air filter, When replacing the 1st filter, replace it together



1st Medium filter (Filter replacement cycle is indicated by the pneumatic sensor) (Option)

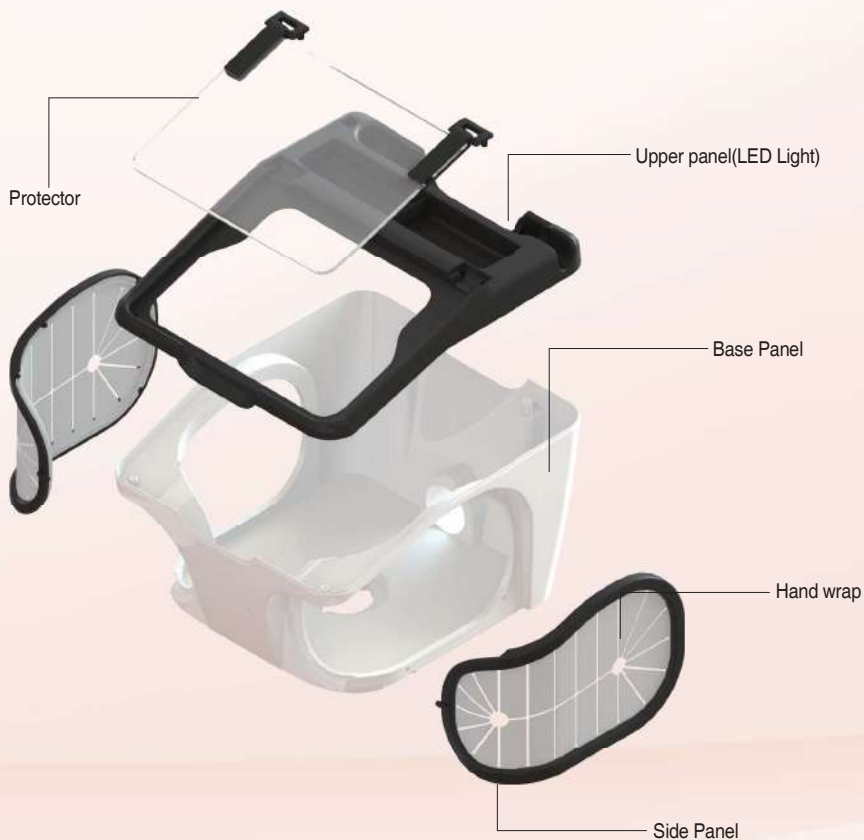
Grinding box & assembly



Assemble Grinding box

Grinding box assembly drawing

- It is easy to disassemble and assemble.
- Easy and convenient to clean after use.
- It is possible to precision work with LED light



Mobile workstation Micromotor type



front



back side

K-2 Steel Mobile workstation

Specification

- Power supply : single phase AC220V-240V, 540W, 50/60Hz
single phase AC120V, 50/60Hz
- Body material : Powder coated steel
- 1st Filter : Pocket filter
- 2nd Filter : Air cleaner filter
- 3rd Filter : Air filter
- Arm rest (Micromotor holder)
- Micromotor installed (Micromotor & Foot pedal)
- Clean head (LED light, dust net, bursh, bur tray, Handwrap, Glass shield)
- Control panel (Touch pad, Filter alarm, Micromotor control)
- Medical caster
- Power plug



Foot pedal(folding plate)



Foot pedal(folding plate)

Desktop Dust Collector with hood

Silence -H1



Touchpad

Specifications

- Power supply : Single phase AC220V-240V, 50/60Hz
Single phase AC100V-120V, 50/60Hz
- Motor's RPM : 32,000RPM
- Air pressure (Kpa) : 23.7Kpa (230V) / 25.2Kpa (120V)
- Air flow (L/min) : 3750L/min (230V) / 3660L/min (120V)
- Body Materials : ABS, PP, PETG
- Output power : 1251W (230V) / 1247W (120V)
- Current : 5.2A (230V) / 10A (120V)
- Control panel : Suction level display, filter alarm, Vacuum motor
- 1st Filter : Medium filter
- 2nd Filter : ULPA filter (99.9995%)
- 3rd Filter : Air filter
- Noise level : MAX.55dB
- Suction level : 1-9 step
- Motor operating temperature : 0-40°C
- Dimensions (Body) : 295mm (W) x 330mm (D) x 485mm (H)
(Height to handle)
- This device can be linked with a micromotor controller.
- Filter replacement (cleaning) alarm by the pneumatic sensor

Component

- Main body
- Power plug
- Suction hose with O cap

Optional Acc'y

- Pocket filter
- Foot switch (For suction on/off)
- Table
- L cap
- U cap



1st Pocket filter



2nd Filter Bracket



3rd ULPA filter
(U15 / 99,9995%)



4th Air filter



1st HEPA filter
(Option)



Dust collector



Hose & O hood



Example of use
(A table is sold separately)

Desktop Dust Collector with hood (Micromotor type)

Silence -HM1

Specifications

- Power supply : Single phase AC220V-240V, 50/60Hz
Single phase AC100V-120V, 50/60Hz
- Motor's RPM : 32,000RPM
- Air pressure (Kpa) : 23.7Kpa (230V) / 25.2Kpa (120V)
- Air flow (L/min) : 3750L/min (230V) / 3660L/min (120V)
- Body Materials : ABS, PP, PETG
- Output power : 1251W (230V) / 1247W (120V)
- Current : 5.2A (230V) / 10A (120V)
- Control panel : Suction level display, filter alarm, Micromotor control display, Vacuum motor
- 1st Filter : Medium filter
- 2nd Filter : ULPA filter (99.9995%)
- 3rd Filter : Air filter
- Noise level : MAX.55dB
- Suction level : 1-9 step
- Motor operating temperature : 0-40 °C
- Dimensions (Body) : 295mm (W) x 330mm (D) x 485mm (H)
(Height to handle)
- Filter replacement (cleaning) alarm by pneumatic sensor

Component

- Main body
- Power plug
- Suction hose with O cap

Optional Acc'y

- Micromotor & Foot pedal
- Pocket filter
- L cap
- U cap



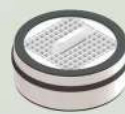
Touchpad



1st Pocket filter



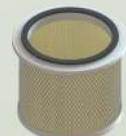
2nd Filter Bracket



3rd ULPA filter
(U15 / 99,9995%)



4th Air filter



1st HEPA filter
(Option)



Dust collector



Hose & O hood



Micromotor & Foot pedal
(Option)



Example of use
(A table is sold separately)

Desktop Dust Collector with 3 Joint Arm



Touchpad

Silence -A1

Specifications

- Power supply: Single phase AC220V-240V, 50/60Hz
Single phase AC100V-120V, 50/60Hz
- Motor's RPM : 32,000RPM
- Air pressure (Kpa) : 23.7Kpa (230V) / 25.2Kpa (120V)
- Air flow (L/min) : 3750L/min (230V) / 3660L/min (120V)
- Body Materials : ABS, PP, PETG
- Output power : 1251W (230V) / 1247W (120V)
- Current : 5.2A (230V) / 10A (120V)
- Control panel : Suction level display, filter alarm, Vacuum motor
- 1st Filter : Medium filter
- 2nd Filter : ULPA filter (99.9995%)
- 3rd Filter : Air filter
- Noise level : MAX.55dB
- Suction level : 1-9 step
- Motor operating temperature : 0-40 °C
- Dimensions (Body) : 295mm (W) x 330mm (D) x 485mm (H)
(Height to handle)
- This device can be linked with a micromotor controller.
- Filter replacement (cleaning) alarm by the pneumatic sensor

Component

- Main body
- Power plug
- 3 Joint Arm with O hood

Optional Acc'y

- Pocket filter
- Foot switch (For suction on/off)
- Table
- L cap
- U cap



1st Pocket filter



2nd Filter Bracket



3rd ULPA filter
(U15 / 99,9995%)



4th Air filter



1st HEPA filter
(Option)



Dust collector



3 Joint arm



Example of use
(A table is sold separately)

Desktop Dust Collector with 3 Joint Arm (Micromotor type)

Silence -AM1

Specifications

- Power supply: Single phase AC220V-240V, 50/60Hz
Single phase AC100V-120V, 50/60Hz
- Motor's RPM : 32,000RPM
- Air pressure (Kpa) : 23.7Kpa (230V) / 25.2Kpa (120V)
- Air flow (L/min) : 3750L/min (230V) / 3660L/min (120V)
- Body Materials : ABS, PP, PETG
- Output power : 1251W (230V) / 1247W (120V)
- Current : 5.2A (230V) / 10A (120V)
- Control panel : Suction level display, filter alarm, Vacuum motor
Micromotor control display
- 1st Filter : Medium filter
- 2nd Filter : ULPA filter (99.9995%)
- 3rd Filter : Air filter
- Noise level : MAX.55dB
- Suction level : 1-9 step
- Motor operating temperature : 0-40 °C
- Dimensions (Body) : 295mm (W) x 330mm (D) x 485mm (H)
(Height to handle)
- Micromotor : Max. 35,000 RPM, 40W, Hand & Foot function,
FWD & REV direction.
- Filter replacement (cleaning) alarm by the pneumatic sensor

Component

- Main body
- Power plug
- 3 Joint Arm with O hood

Optional Acc'y

- Pocket filter
- Micromotor & Foot pedal
- Table
- L cap
- U cap



Touchpad



1st Pocket filter



2nd Filter Bracket



3rd ULPA filter
(U15 / 99,9995%)



4th Air filter



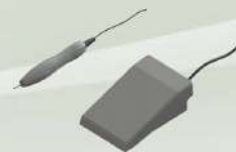
1st HEPA filter
(Option)



Dust collector



3 Joint arm



Micromotor & Foot pedal
(Option)



Example of use
(A table is sold separately)

Desktop Dust Collector with Grinding box & 1500mm Flexible hose

Silence -G1

Specifications

- Power supply: Single phase AC220V-240V, 50/60Hz
Single phase AC100V-120V, 50/60Hz
- Motor's RPM : 32,000RPM
- Air pressure (Kpa) : 23.7Kpa (230V) / 25.2Kpa (120V)
- Air flow (L/min) : 3750L/min (230V) / 3660L/min (120V)
- Body Materials : ABS, PP, PETG
- Output power : 1251W (230V) / 1247W (120V)
- Current : 5.2A (230V) / 10A (120V)
- Control panel : Suction level display, filter alarm, Vacuum motor
- 1st Filter : Medium filter
- 2nd Filter : ULPA filter (99.9995%)
- 3rd Filter : Air filter
- Noise level : MAX.55dB
- Suction level : 1-9 step
- Motor operating temperature : 0-40 °C
- Dimensions (Body) : 295mm (W) x 330mm (D) x 485mm (H)
(Height to handle)
- This device can be linked with a micromotor controller.
- Filter replacement (cleaning) alarm by the pneumatic sensor



Touchpad

Component

- Main body
- Power plug
- LED Grinding box + Adapter
- 1500mm flexible hose

Optional Acc'y

- Pocket filter
- Foot switch (For suction on/off)
- Table



1st Pocket filter



2nd Filter Bracket



3rd ULPA filter
(U15 / 99,9995%)



4th Air filter



1st HEPA filter
(Option)



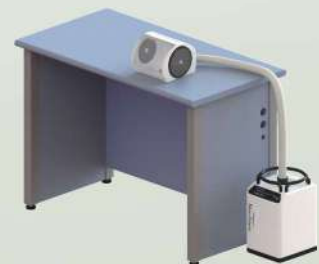
Dust collector



Grinding box & LED light



1500mm Flexible hose



Example of use
(A table is sold separately)

Desktop Dust Collector with Grinding box & 1500mm Flexible hose

Silence -GM1

Specifications

- Power supply : Single phase AC220V-240V, 50/60Hz
Single phase AC100V-120V, 50/60Hz
- Motor's RPM : 32,000RPM
- Air pressure (Kpa) : 23.7Kpa (230V) / 25.2Kpa (120V)
- Air flow (L/min) : 3750L/min (230V) / 3660L/min (120V)
- Body Materials : ABS, PP, PETG
- Output power : 1251W (230V) / 1247W (120V)
- Current : 5.2A (230V) / 10A (120V)
- Control panel : Suction level display, filter alarm, Vacuum motor
Micromotor control display
- 1st Filter : Medium filter
- 2nd Filter : ULPA filter (99.9995%)
- 3rd Filter : Air filter
- Noise level : MAX.55dB
- Suction level : 1-9 step
- Motor operating temperature : 0-40 °C
- Dimensions (Body) : 295mm (W) x 330mm (D) x 485mm (H)
(Height to handle)
- Micromotor : Max. 35,000 RPM, 40W, Hand & Foot function,
FWD & REV direction.
- Filter replacement (cleaning) alarm by the pneumatic sensor



Touchpad

Component

- Main body
- Power plug
- LED Grinding box + Adapter
- 1500mm flexible hose

Optional Acc'y

- Pocket filter
- Micromotor & Foot pedal



1st Pocket filter



2nd Filter Bracket



3rd ULPA filter
(U15 / 99,9995%)



4th Air filter



1st HEPA filter
(Option)



Dust collector



Grinding box & LED light



1500mm Flexible hose



Micromotor & Foot pedal
(Option)



Example of use
(A table is sold separately)

Application of Dust collector



CAM-100
Dust Collector



No handle(Optional)



Example of use
(A table is sold separately)



CAM-200
Dust Collector



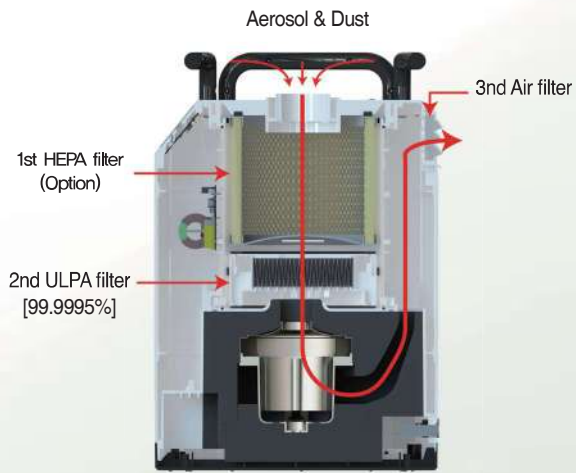
No handle(Optional)



Example of use
(A table is sold separately)

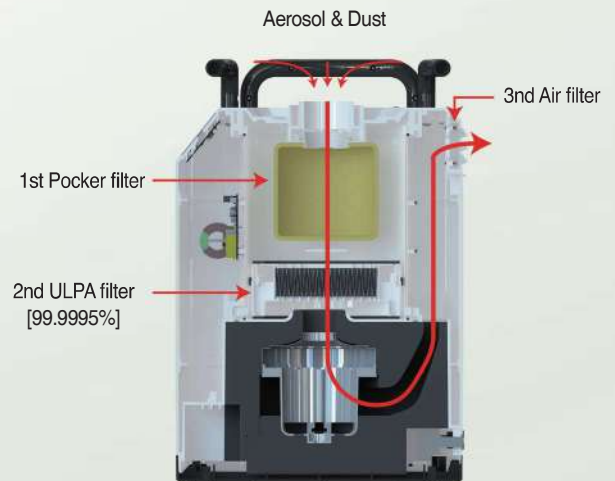
Cross-section of Desktop Dust collector

Desktop Dust collector (1st Circle filter)



[Cross-section]

Desktop Dust collector(1st Pocket filter)



[Cross-section]



For indoor exhaust



For outdoor exhaust



 **KO-MAX**
Value for the Future

www.stomshop.pro