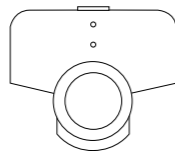
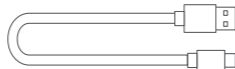




1. Camera kit



OXO Camera 4K (1)



Micro USB cable (1)



Manual (1)

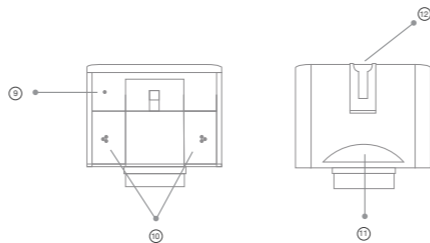
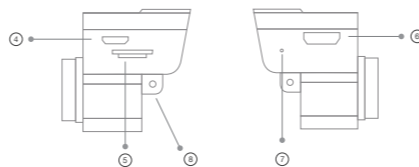
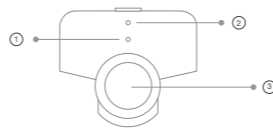


Focus/WB Card (1)



Lens Cloth (1)

2. Getting to know the camera



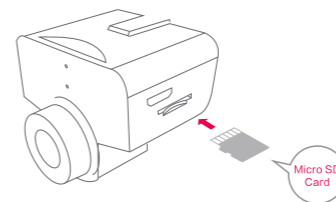
- ① Power status LED Light/Video status light
- ② WiFi status light
- ③ Lens
- ④ Micro USB port
- ⑤ SD Card slot
- ⑥ HDMI port

- ⑦ WiFi On/Off pinch
- ⑧ Mount connect
- ⑨ Speaker
- ⑩ Microphone
- ⑪ Power/Shutter button
- ⑫ Light Holder

3. Insert/Remove Micro SD card (sold separately)

To insert Micro SD card:
Slide card into card slot with label facing bottom. Card will click into place when fully inserted.

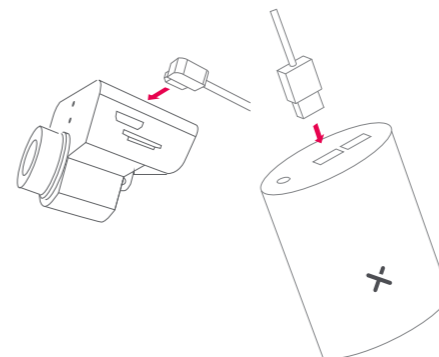
To remove Micro SD card:
Press fingernail against edge of card and lightly push further into camera. Card will spring out to be removed.



Tip: We recommend using a 32-64GB micro SD card class 10 or UHS-1

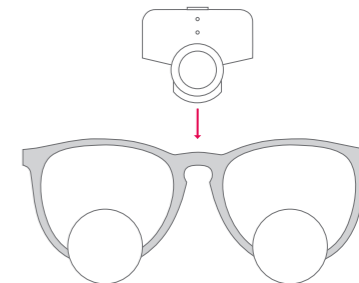
4. Connect the battery

To connect the battery:
1. Take the USB cable included in this kit
2. Connect the micro USB side to micro USB port
3. Connect the Male A USB side to one USB A port (See Battery manual)

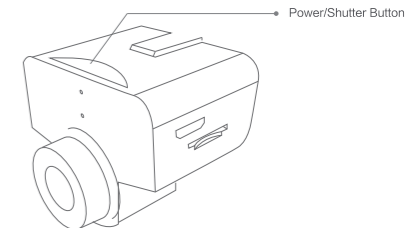


5. Attach the camera to your loupes

1. Place your loupe mounting attachment on the camera (See Connect manual)
2. Use the mounting adapter to attach the camera to your loupes.
3. Thread the USB cable along the side of your glasses using the cable rings.
4. Head the camera angle in confluence with the angle of your loupes.



6. How to use the camera



6.1. Powering on and off

To power on:
1. Press battery ON/OFF button (See Battery manual)
2. Press and hold the Power/Shutter Button for 2 seconds. The camera will emit a sound and status LED light turns on.

To power off: To power off: Press and hold the Power/Shutter button for 3 seconds. LED light will turn off and emit a sound.

With the app, you can control the camera or transfer files from the camera to your smartphone.

Thank you for choosing OXO 4K Camera

6.2. Connect to OXO Camera App

To control the camera remotely access the OXO 4K App on your smartphone or tablet.

Tip: Find the App on the App Store® or Google Play store by searching for OXO 4K.

Open the OXO 4K App and follow the steps to connect with the camera.

Tip: The set up network name will look like OXO4K-XXXX and the password will be 12345678

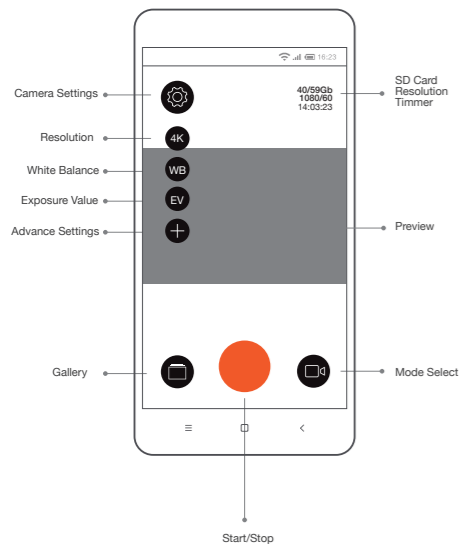
7. Set up the camera

7.1 Resolution/Mode

1. Select the Video or Photo mode.
2. Choose the desired resolution.

7.2 Focus

1. Use the focus card to calibrate your camera
2. Place the focus card at the approximate working distance and look through your loupes
3. Center the focus card until you see the point in the centre of the image and is sharp.
4. Move the camera up/down until you see the same image through your loupes and in the App preview.
5. If image is defocused, hold the focus card with one of your hands and focus the camera by twisting the lens with your other hand.
6. Turn the lock ring anticlockwise until it stops and the lens is firmly fixed.



With the app, you can control the camera or transfer files from the camera to your smartphone.

7.3 White Balance (WB)

1. Place the WB card in the same place where the recording is to be made and perpendicular to your point of view.
2. Make sure that the lighting is similar to what will be during the recording.
3. Select WB on the settings menu.
4. Hold the position for 3 seconds and select "Set WB".
5. Check that WB is correct. Otherwise, reset and repeat.

Attention: WB setting will turn to its initial values each time you change the Resolution and/or Mode. You need to make a WB each time you change Resolution and/or mode.



Tip: Make sure that the full FOV of the camera is collected within the area of the WB card before you set the white balance

7.4 Exposure Value (EV)

1. Select EV on the App setting.
2. Move the slider until the desired image is obtained.
3. Confirm by using the check button

7.5 Start/Stop

1. Press the start/stop button on the App and start enjoying your videos/photos.

Tip: More configuration options available in the button Advance Setting

Attention: It is illegal in many jurisdictions to record audio and/or video without the consent of all individuals. You must comply with all laws when using OXO 4K Camera

8. Playback/Download photos and videos

8.1 Playback Photos and videos

1. Go to Gallery App
2. Select the photo or video to playback
3. Click on it.

8.2 Download

1. Go to Gallery App
2. Select the photo or video to be downloaded
3. Press the download button at the bottom of the screen.
4. Videos and photos will be downloaded in your smartphone.

Tip: Remove the Micro SD card and insert it into your computer.

www.stomshop.pro

9. Cleaning Instructions

OXO 4K Camera is a precision optical-electrical instrument manufactured from high quality components. With proper care, it will provide a long and useful life. You should adhere to the following instructions for proper cleaning and disinfection, or damage may result.

- You can clean the surface of your OXO 4K Camera with the included cleaning cloth.
- DO NOT use alcohol, harsh cleaners or solvents to clean the camera.
- You can disinfect the surface of your OXO 4K Camera with alcohol-free disinfectant wipes.
- If your eyewear is heavily soiled, first remove the camera, and then clean your eyewear. Be sure to dry your eyewear thoroughly before reinstalling the camera.

10. Updates & Support

10.1 Firmware update

First check what version of firmware your camera is running. This information can be found within the advance settings menu of the App.

Look for higher version numbers in the support section of our website: www.oxotechnology.com/support. If the version numbers are the same, there is no need to perform an update.

Updating your camera's firmware:

1. Download the latest firmware in your computer from www.oxotechnology.com.
2. Copy the new firmware into a micro SD card and insert in the camera.
3. Turn on the camera and wait until both blue LED lights are fixed.

Tip: Make sure that the camera is connected to the battery and that the battery is fully charged before updating your camera's firmware.

10.2 Technical support

Please visit www.oxotechnology.com or email support@oxotechnology.com

IMPORTANT SAFETY GUIDELINES

1. READ this user manual carefully
2. READ all the Warning and Warranty documents.
3. CLEAN ONLY with dry cloth. DO NOT use alcohol, harsh cleaners or solvents to clean the camera
4. DO NOT use near any heat sources such as radiators, heat registers, stoves apparatus (including amplifiers) that produce heat.
5. ONLY USE attachments/accessories specified by manufacturer
6. To get the best usage out of this product, please consistently update the latest version of our app and firmware.

"OXO" and "X" logo are trademarks of OXO Technology S.L.
WARNINGS: NO naked flame sources, such as candle should be placed on the product.

Thanks you for choosing OXO 4K Camera
Please read this manual carefully and save it for future needs

<http://www.oxotechnology.com>

CE Mark

This device is in conformity with the essential requirements and other relevant requirements of the following Directives:

Electromagnetic Compatibility (EMC) Directive 2014/30/EU
Low Voltage Directive (LVD) 2014/35/EU and standards EN 60598
Radio Equipment Directive (RED) 2014/53/EU
RoHS Recast Directive 2011/65/EC
RoHS Directive 2015/863/EU
The product carries the CE mark accordingly.

FCC and IC Rules

FCC Warning

This device complies with part 15 of the FCC Rules. Operation is subject to the following two conditions: (1) This device may not cause harmful interference, and (2) this device must accept any interference received, including interference that may cause undesired operation.

Any Changes or modifications not expressly approved by the party responsible for compliance could void the user's authority to operate the equipment.

Note: This equipment has been tested and found to comply with the limits for a Class B digital device, pursuant to part 15 of the FCC Rules. These limits are designed to provide reasonable protection against harmful interference in a residential installation. This equipment generates uses and can radiate radio frequency energy and, if not installed and used in accordance with the instructions, may cause harmful interference to radio communications. However, there is no guarantee that interference will not occur in a particular installation. If this equipment does cause harmful interference to radio or television reception, which can be determined by turning the equipment off and on, the user is encouraged to try to correct the interference by one or more of the following measures:

- Reorient or relocate the receiving antenna.
- Increase the separation between the equipment and receiver.
- Connect the equipment into an outlet on a circuit different from that to which the receiver is connected.
- Consult the dealer or an experienced radio/TV technician for help.

This equipment should be installed and operated with minimum distance of 15mm between the radiator & your body. The device has been evaluated to meet general RF exposure requirement. The device can be used in portable exposure condition without restriction.

IC Warning

This device complies with Industry Canada licence-exempt RSS standard(s). Operation is subject to the following two conditions: (1) This device may not cause interference, and (2) This device must accept any interference, including interference that may cause undesired operation of the device.

Le présent appareil est conforme aux CNR d'Industrie Canada applicables aux appareils radio exempts de licence. L'exploitation autorisée aux deux conditions suivantes:

- (1) l'appareil ne doit pas produire de brouillage, et
- (2) l'utilisateur de l'appareil doit accepter tout brouillage radioélectrique subi, même si le brouillage est susceptible d'en compromettre le fonctionnement.

This equipment should be installed and operated with minimum distance of 15mm between the radiator & your body. The device has been evaluated to meet general RF exposure requirement. The device can be used in portable exposure condition without restriction.

Cet équipement doit être installé et opéré avec un minimum de 15mm de distance entre l'émetteur et votre corps. Le dispositif a été évalué pour se conformer aux exigences générales en termes de exposition aux radio-féquences. Le dispositif peut être utilisé en conditions de portabilité sans restrictions.



FCC ID: 2ARGV-121018X
IC: 24407-121018X