

# VITA ZYRCOMAT® 6000/6100 MS

1. Commissioning

2. Measuring

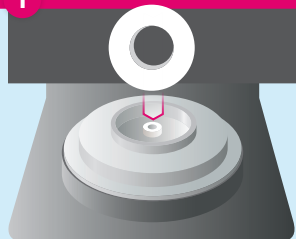
3. Evaluation

4. Measures

temperature calibration

1. Commissioning

## 1 Positioning of sintering ring



Place the sintering ring without sintering beads in the center of the sintering tray\*.

2

## Start firing



VITA vPad comfort



VITA vPad excellence

Start sintering program "YZ T Universal" via the "VITA" profile\*\*.

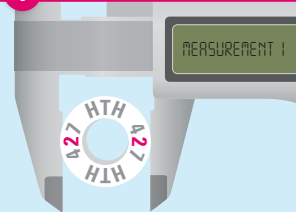
## 3 Removal of sintering ring



Remove sintering ring and measure with caliper.

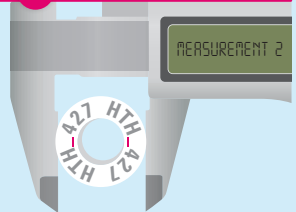
2. Measuring

## 1 Measurement procedure 1



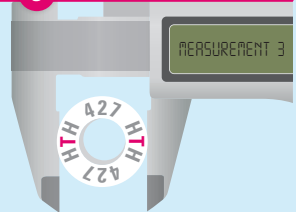
Measure the diameter of the sintering ring at the middle number (example of the sintering ring).

## 2 Measurement procedure 2



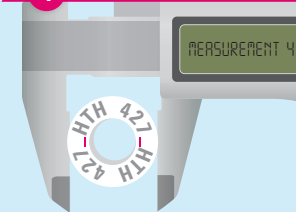
Turn the sintering ring by 45° and measure between number and letter.

## 3 Measurement procedure 3



Turn the sintering ring another 45° and measure at the middle letters.

## 4 Measurement procedure 4



Turn sintering ring another 45° and measure between number and letter.

\*) There must not be any other objects in the firing chamber. The firing chamber must be completely cooled down for sintering.

\*\*) Find accurate information on the sintering program in the corresponding operating manual [www.stomshop.pro](http://www.stomshop.pro)

Please use for evaluation!

# VITA ZYRCOMAT® 6000/6100 MS

1. Commissioning

2. Measuring

3. Evaluation

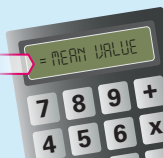
4. Measures

temperature calibration

3. Evaluation

1 Calculate the mean value

Measurement 1  
+ Measurement 2  
+ Measurement 3  
+ Measurement 4  
= Total  
÷ 4



Add the measured values and divide the sum by four to obtain the average.

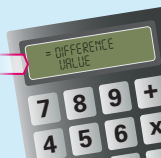
2 Read off temperature

VITA ZYRCOMAT® 6000/6100 MS	
Temperature Checking-Set	
Ø mm	°C/F
Mean value 1	Ring temperature 1
Mean value 2	Ring temperature 2
Mean value 3	Ring temperature 3
Mean value 4	Ring temperature 4
Mean value 5	Ring temperature 5
Mean value 6	Ring temperature 6
Mean value 7	Ring temperature 7
Mean value 8	Ring temperature 8
Mean value 9	Ring temperature 9
Mean value 10	Ring temperature 10
	Ring temperature 11

Read off corresponding ring temperature from the table attached (example of the conversion table).

3 Calculate the temperature difference

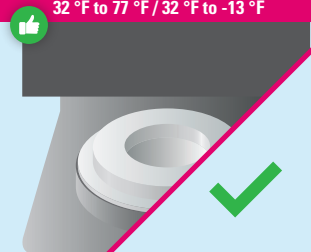
Ring temperature  
- 1625 °C/2957 °F



Subtract the value 1625 °C/2957 °F (master ring) from the ring temperature that has been read and obtain the difference value.

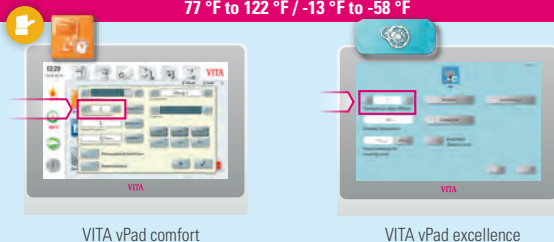
4. Measures

Difference value 0 °C to +/-25 °C  
32 °F to 77 °F / 32 °F to -13 °F



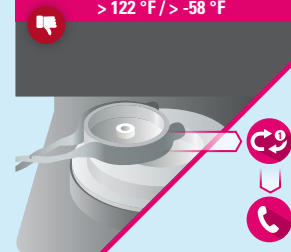
Temperature difference inside the tolerance range.

Difference value +/-25 °C to +/-50 °C  
77 °F to 122 °F / -13 °F to -58 °F



Correct the oven temperature. Insert the difference value in the "temperature adjustment (offset)" field\*.

Difference value > +/-50 °C  
> 122 °F / > -58 °F



Temperature difference outside of the adjustable range. Repeat test firing. Contact dealer.

\* **Temperature too low** (calculated difference value has minus sign): Insert difference value with minus sign; **Temperature too high** (calculated difference value has plus sign): Insert difference value without sign (automatically positive). Find accurate information on the temperature adjustment field (offset) in the corresponding operating manual of the VITA vPad excellence or the VITA vPad confort.