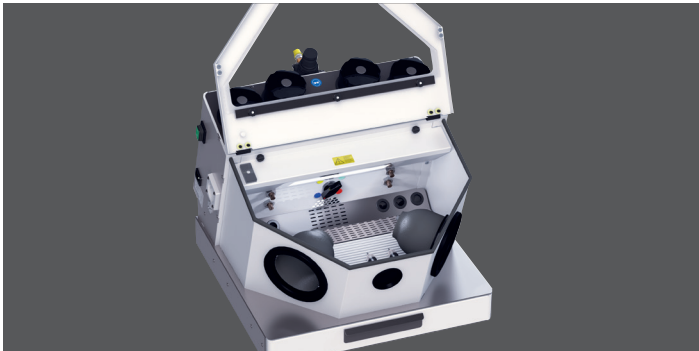




Ergonomically shaped handpieces and a separate air blasting nozzle



Gobi Comfort-4



Gobi Comfort-3



Gobi Comfort-2

**MADE IN GERMANY**

Wassermann is a medium-sized, owner-operated company with head office in Hamburg. We design and produce high-quality technical devices in Germany. Our main users are dental laboratories, dental clinics and various industrial areas worldwide.

**Why a Wassermann product?**

Wassermann products are manufactured from high-quality materials and the proportion of plastics used is intentionally kept as low as possible. Our devices are known for their suitability for daily use, functionality and longevity. As a result, the users place high levels of trust in the Wassermann brand. We feel it is our duty to support our customers on a daily basis when it comes to safety, service and productivity. Technological perfection, optimum quality and especially sustainability are the benchmarks we set. Thanks to the combination of these values, the family-owned company, since its establishment in 1927, has gained worldwide recognition as a manufacturer of high-quality products.



Further information are available on our website at [www.wassermann.hamburg](http://www.wassermann.hamburg)

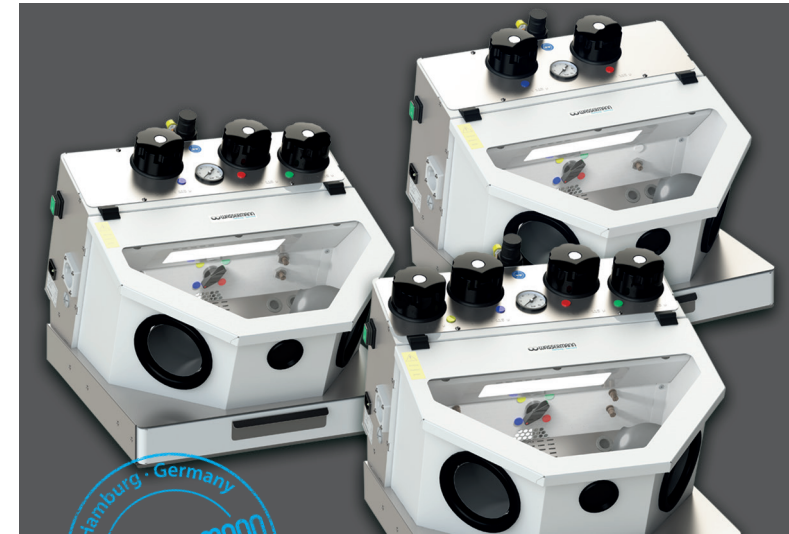


/WassermannDentalmaschinen

Your Dental Dealer \_\_\_\_\_

[www.stomshop.pro](http://www.stomshop.pro)

**Gobi Comfort-4/ -3/ -2**



**Fine Blasting Units**



Wassermann Dental-Maschinen GmbH  
 Rudorffweg 15-17 · 21031 Hamburg · Germany  
 Phone: +49 (0)40 730 926-20/ -24 · Fax: +49 (0)40 730 37 24  
 export@wassermann-dental.com · www.wassermann.hamburg  
 www.facebook.com/WassermannDentalmaschinen

# Fine Blasting Units

## Gobi Comfort-4, Gobi Comfort-3 & Gobi Comfort-2

Whether sand-blasting, roughening or polishing: First-class work results are guaranteed by using the precision fine blasting units of the **Gobi Comfort series**. These fine blasting specialists equipped with either 2 to 4 full metal blasting material tanks offer unique features in its class. The entire system is continuously under pressure and is therefore always ready for use. Even when switching on the unit again, you can use the quick start- and quick stop function to begin blasting immediately. This is possible due to the crushing valve at the conducting hose.

We recommend the use of Wassermann blasting materials and our low-pressure suction units **SG-10, SG-1/1** and **SG-1/2 D**.  
PVC-hose Ø 75 mm, various lengths available, see flyer "Accessories for suction technology".

Precise working pressure of 0.8–6 bar with pressure gauge control

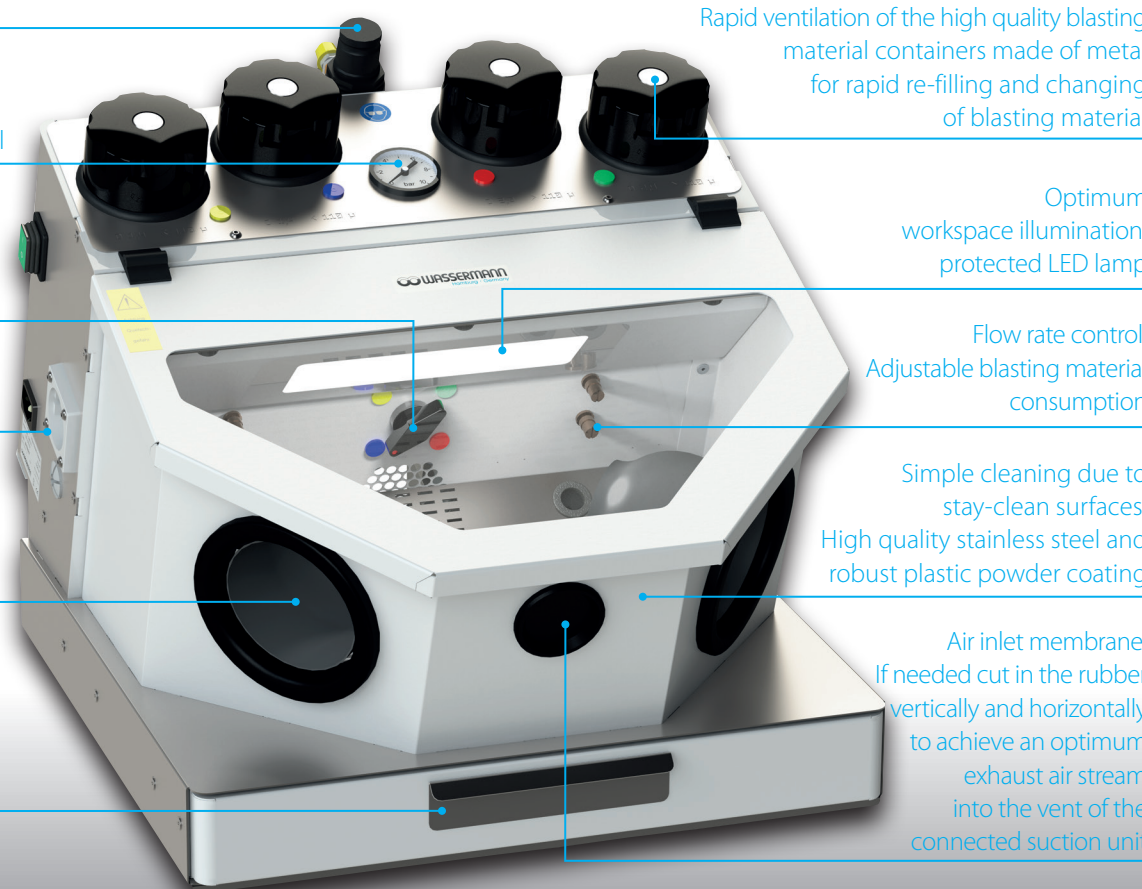
Permanent pressure system: Prevents contamination and moisture of blasting material

Easy choice of the desired blasting material by using the selection switch for colour circuit settings

With plug socket, e.g. for a suction unit

High hygiene standard because of changeable sleeve

Sand drawer for catching coarse of materials to relieve filters



Rapid ventilation of the high quality blasting material containers made of metal for rapid re-filling and changing of blasting material

Optimum workspace illumination, protected LED lamp

Flow rate control: Adjustable blasting material consumption

Simple cleaning due to stay-clean surfaces: High quality stainless steel and robust plastic powder coating

Air inlet membrane: If needed cut in the rubber vertically and horizontally to achieve an optimum exhaust air stream into the vent of the connected suction unit

### Major Features

- Multifunctional fine blasting units with 2 to 4 chambers
- With handy air blasting nozzle for easy cleaning
- Genuine quick start/stop function, foot-controlled
- Comfortably to handle with ergonomically shaped handpieces
- Cost savings thanks to noticeable low consumption of blasting material
- Special particularly durable hoses
- Convenient colour coding system
- Specially coated safety screen for ideal visibility
- Designed for long durability
- **Included in delivery:**  
Compressed air hose, 2 m  
592012 Supply line 3 core with angle plug  
(Delivered only on request: 592011 Supply line 3 core US 13 A)  
**Gobi Comfort-4** incl. 4 fine blasting nozzles:  
0.6 (yellow), 0.8 (blue), 1.2 (red), 0.8 (green)  
**Gobi Comfort-3** incl. 3 fine blasting nozzles:  
0.8 (blue), 1.2 (red), 0.8 (green)  
**Gobi Comfort-2** incl. 2 fine blasting nozzles:  
0.8 (blue), 1.2 (red)

Accessories	Item no.
Extractor nozzle Ø 40 mm exterior	143385
Extractor nozzle Ø 50 mm exterior	190286
Compressed air hose per meter	320026
Spare fine blasting nozzle 0.6 mm	190550
Spare fine blasting nozzle 0.8 mm	190551
Spare fine blasting nozzle 1.2 mm	190552
<b>Gobi Comfort-4</b>	<b>Item no. 190884</b>
<b>Gobi Comfort-3</b>	<b>Item no. 190883</b>
<b>Gobi Comfort-2</b>	<b>Item no. 190882</b>
Voltage	100–240 V / 50/60 Hz
Power consumption	0.2 A
Plug socket power consumption	max. 8 A
Output	50 W
W x H x D	445 x 413 x 520 mm
Weight <b>Gobi Comfort-4/-3/-2</b>	21 kg, 18.5 kg, 16.5 kg
Sound level	≤ 70 dB (A)
Tank capacity	420 cm <sup>3</sup>
Compressed air connection	3–6 bar
Working pressure	0.8–6 bar
Extractor nozzle	Ø 75 mm exterior