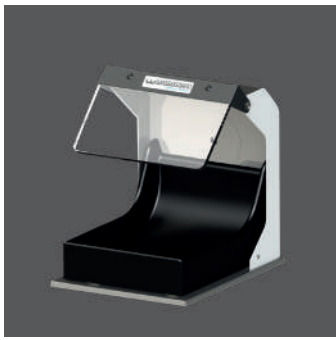


Polishing trough with extractor nozzle



Polishing trough without extractor nozzle



Extraction traverse II for 2 polishing troughs, with switch to guide the air and one extractor nozzle for an external suction unit



WSM-2 with accessories and our low-pressure suction unit SG-1/1

MADE IN GERMANY

Wassermann is a medium-sized, owner-operated company with head office in Hamburg. We design and produce high-quality technical devices in Germany. Our main users are dental laboratories, dental clinics and various industrial areas worldwide.

Why a Wassermann product?

Wassermann products are manufactured from high-quality materials and the proportion of plastics used is intentionally kept as low as possible. Our devices are known for their suitability for daily use, functionality and longevity. As a result, the users place high levels of trust in the Wassermann brand. We feel it is our duty to support our customers on a daily basis when it comes to safety, service and productivity. Technological perfection, optimum quality and especially sustainability are the benchmarks we set. Thanks to the combination of these values, the family-owned company, since its establishment in 1927, has gained worldwide recognition as a manufacturer of high-quality products.

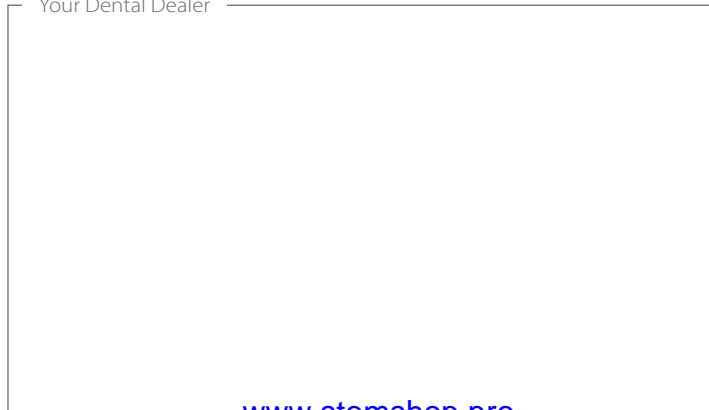


Further information are available on our website at www.wassermann.hamburg



/WassermannDentalmaschinen

Your Dental Dealer _____



www.stomshop.pro

WSM-2



Polishing Motor



Wassermann Dental-Maschinen GmbH
Rudorffweg 15-17 · 21031 Hamburg · Germany
Phone: +49 (0)40 730 926-20/ -24 · Fax: +49 (0)40 730 37 24
export@wassermann-dental.com · www.wassermann.hamburg
www.facebook.com/WassermannDentalmaschinen

Polishing Motor WSM-2

The WSM-2 combines years of experience and technical progress in a polishing motor designed for long life and daily use: For grinding, polishing, roughening, cleaning or brushing – fast, clean and safe.

Robust plastic powder coating

The nuts on each side are used for undoing the polishing spindle and as a form of shaft protection

Control lever with ball-knob, easy to operate even with the ball of the thumb

Very stable, no mounting necessary

Major Features

- Compact polishing motor with numerous usage options: For metals and plastics, the WSM-2 impresses thanks to its outstanding power
- Extremely low-noise due to permanently lubricated ball bearing
- Powerful 500 W motor
- 2 settings, 1500 resp. 3000 min⁻¹
- Almost maintenance-free for life
- **Included in delivery:**
 - Brush spindle right, 92 mm
 - Brush spindle left, 92 mm

Accessories	Item no.
Brush spindle right, 92 mm	152022
Brush spindle left, 92 mm	152025
Brush spindle right, 125 mm	152043
Brush spindle left, 125 mm	152044
Stone holder right	152056
Stone holder left	152057
Drill chuck right, 1-6 mm clamping	152049
Extraction traverse II (W 554 x H 243 x D 163 mm) with output nozzle (Ø 75 mm) for 2 polishing troughs, with switch to guide the air)	143550
Polishing trough* with extractor nozzle (Ø75 mm)	143115
Polishing trough* with extractor nozzle (Ø40 mm)	143131
Polishing trough* without extractor nozzle	143123

* (W 207 x H 275 x D 292 mm) (H depends on the adjustable safety screen)

WSM-2	Item no. 155999
Voltage	220–240 V / 50/60 Hz
Power consumption	2.3 A
Output	500 W
W x H x D	460 x 210 x 195 mm
Weight	13.5 kg
Sound level	≤ 70 dB (A)
Speed	1500 / 3000 min ⁻¹
Height of spindle	130 mm