

# Operation Manual



Product name: Dental loupes

Model Number: PSL

Input voltage: AC100-240V, 50-60HZ

Adapter voltage: 5V 1A

LED power: 5W Battery capacity: 2000mA

Light intensity: 150000Lux

Weight: 1300g Net weight: 160g

Package size: 33\*20\*10 CM



2.5X / 3.5X



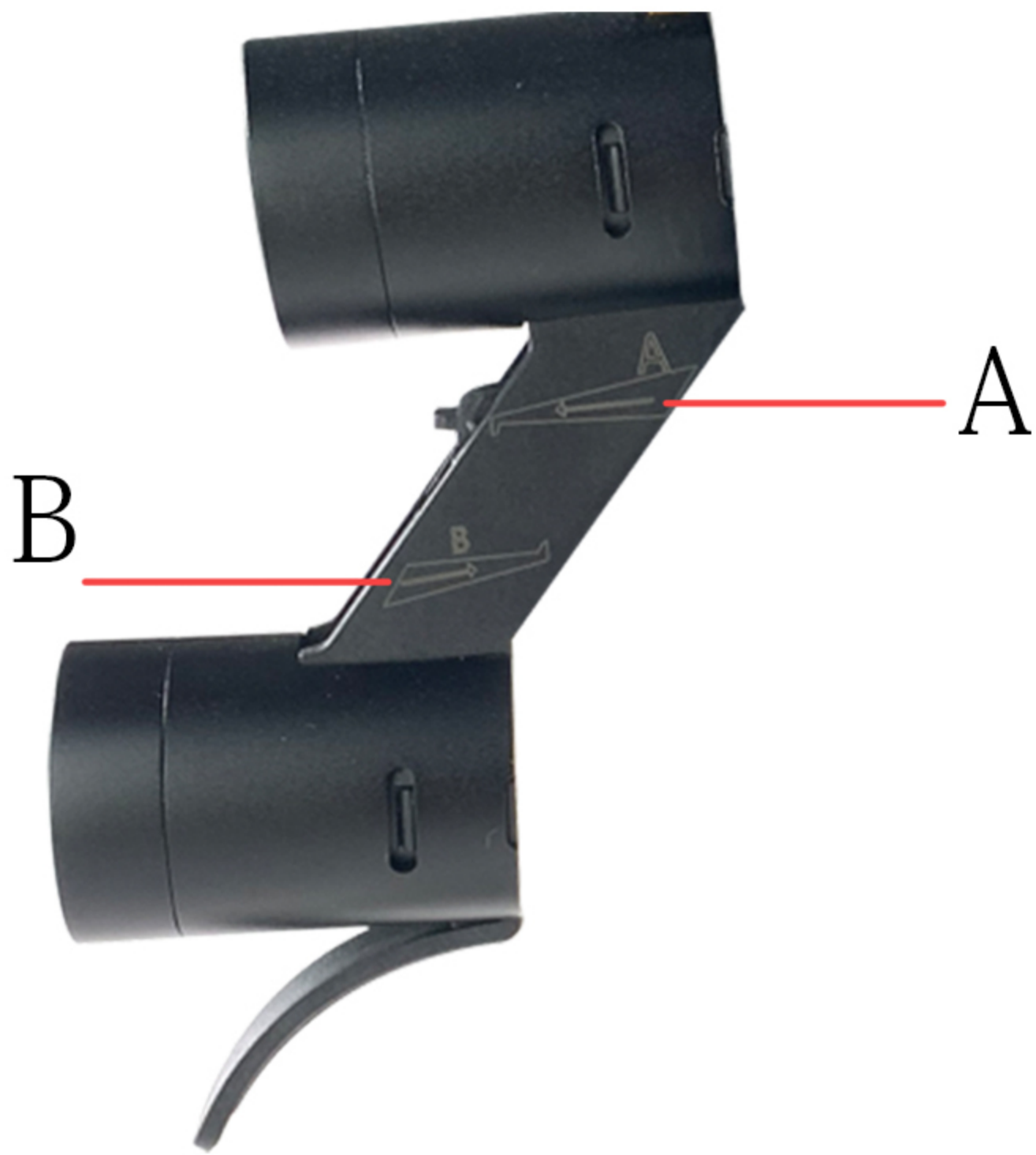
1.5x

Working distance: 420mm

Depth of field: 90mm

Depth of vision: 100mm





A Loupes

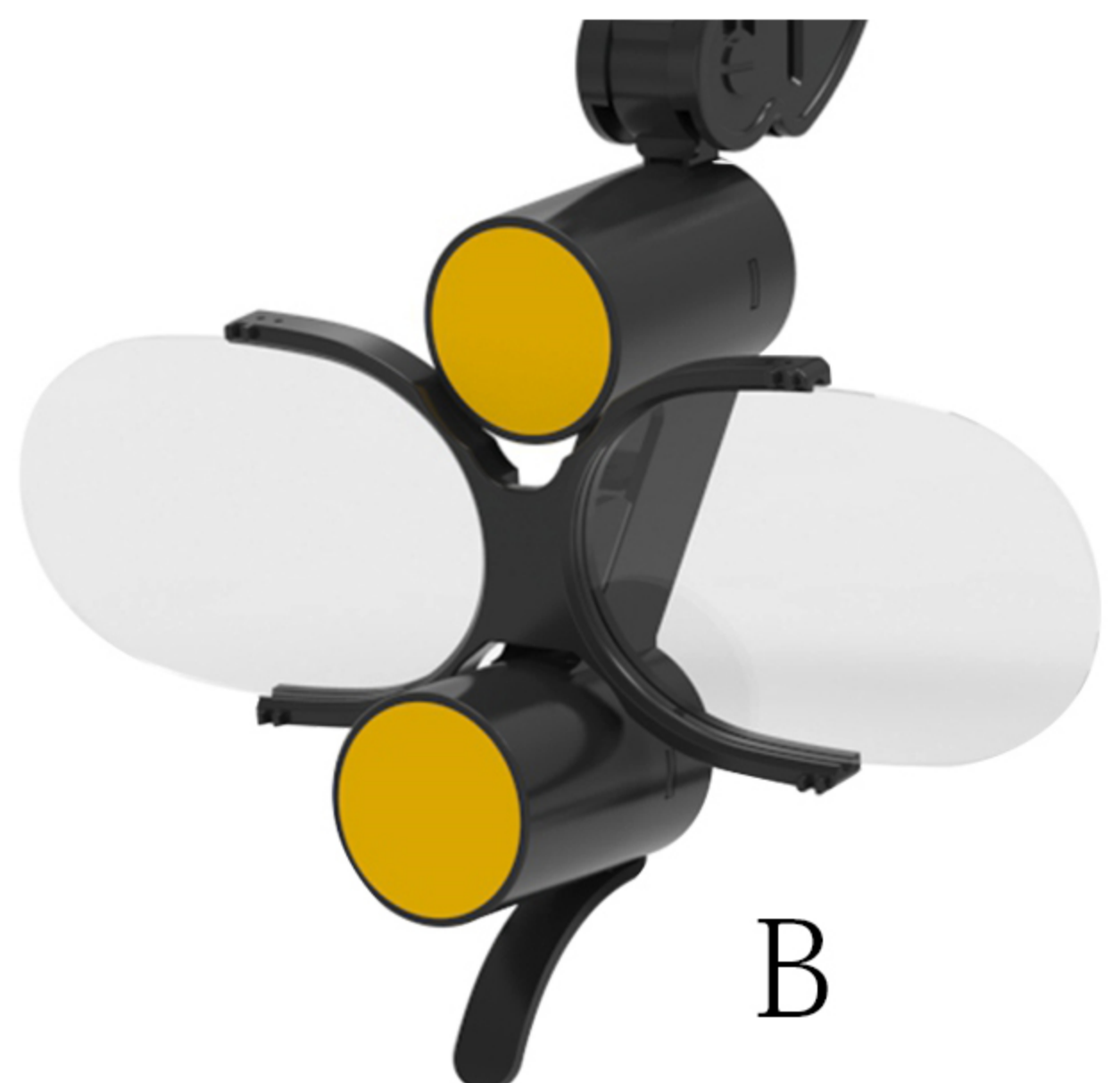


B Magnifier

Position the insertion point where you want to insert the symbol

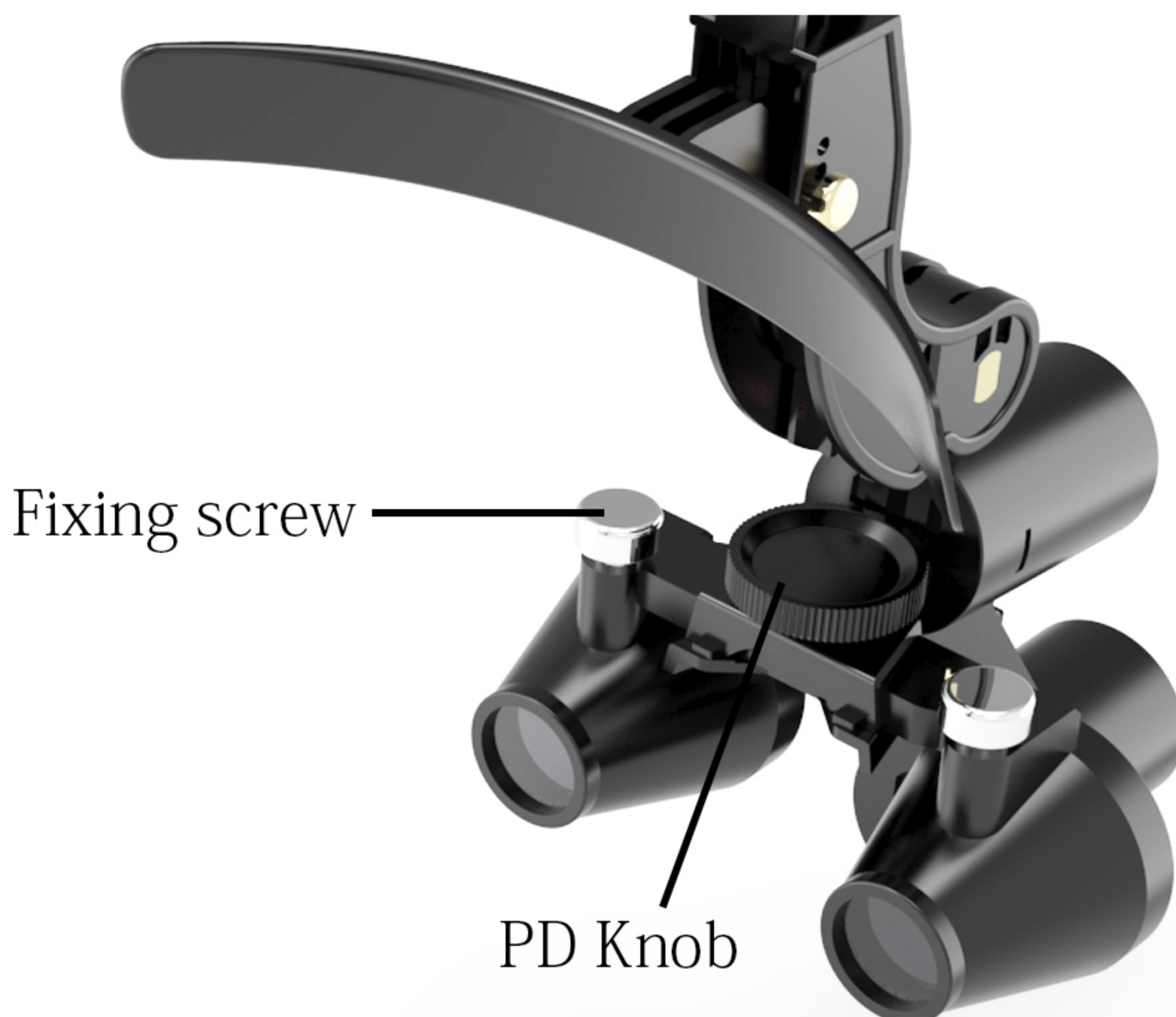
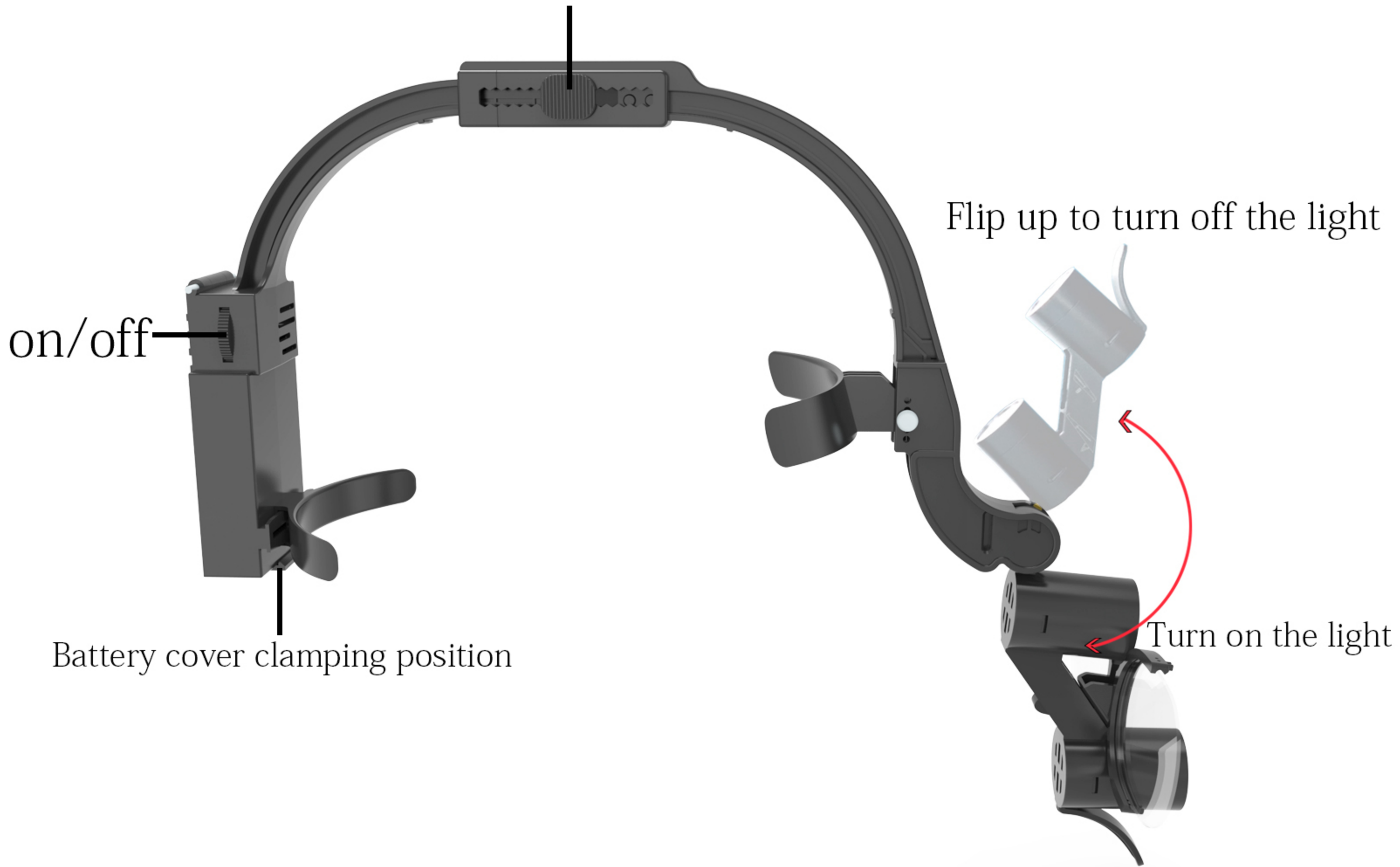


A



B

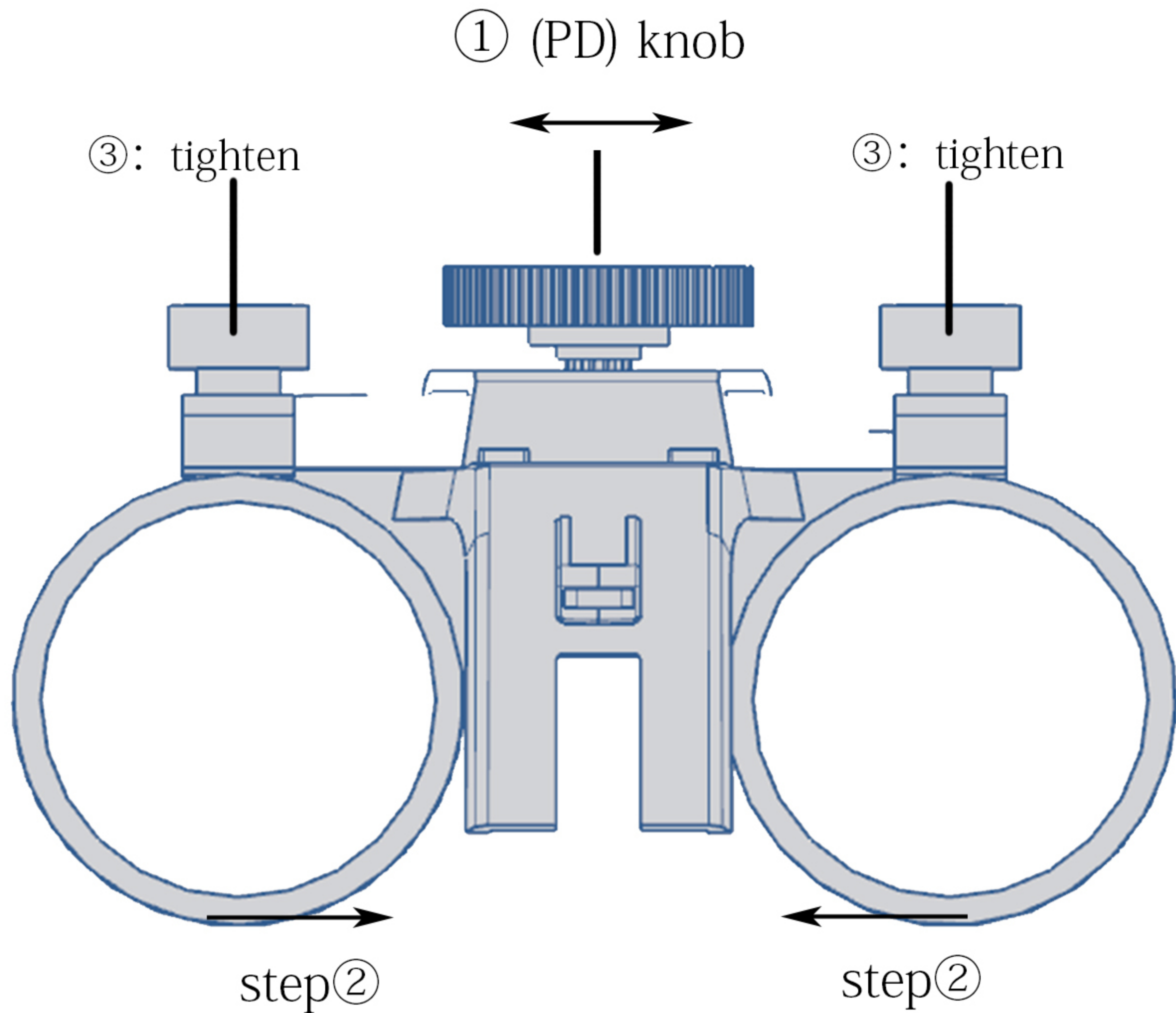
## Front and rear tightness adjustment



Fine-tune the pupillary distance of your telescopes by rotating the pupillary distance (PD) knob on the hinge to adjust the distance between telescopes to align with your eyes.



# Use steps



step①: Fine-tune the pupillary distance of your loupes by rotating the pupillary distance (PD) knob on the hinge to adjust the distance between loupes to align with your eyes.

step②: Adjust the angle inward. (Generally speaking, no adjustment is required by default)

step③: Tighten if necessary

200-240mm

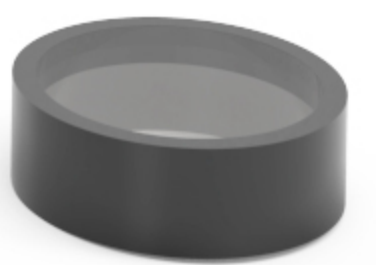
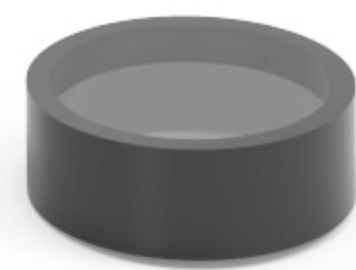


150mm



160-200mm

70mm



# Contain



2.5X/3.5X Loupes \*1



1.5X Magnifier \*1



Color changing lampshade\*2



Battery \*2



Charging rack\*1



Charger \*1



# Getting Started With Your New Loupe

It is common for new users of magnification to experience some initial disorientation. This may also occur when increasing from a lower magnification power to higher powered loupes. In such cases, a two to three week acclimation period is recommended. If you initially experience dizziness, wear your loupe for no more than one hour at a time and start by performing simple procedures. As your eyes adapt to a magnified field and your hand-eye coordination develops, gradually extend the time you wear your loupe.

## Indications for Use

Loupes are a magnification device, worn as a visual aid, intended to magnify oral cavities and operating sites. This device is intended to only be used by qualified medical and healthcare professionals including, but not limited to, dentists, dental hygienists, medical doctors and medical professionals.

## Cleaning and Disinfecting

Your loupe is a precision optical instrument manufactured from high quality components. With proper care, it will provide a long and useful life. You must adhere to the following instructions for proper cleaning and disinfecting, or damage may result.

### DO NOT

- Do not spray directly onto the device
- Do not run any part of the device under water or submerge in any liquid or ultrasonic cleaner
- Do not use an autoclave, chemiclave, glutaraldehyde, iodophor, or any other sterilization method
- Do not use a cleaner with alcohol concentration greater than 70%
- Do not use a paper towel to clean the lenses