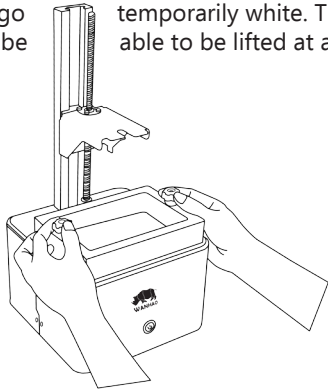
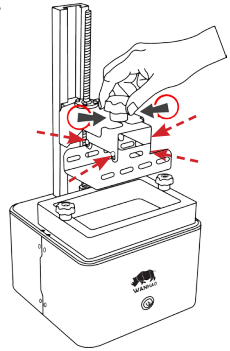


- 7 PREPARE DUPLICATOR 7 FOR PRINTING**
Place vat on top of the LCD screen and tighten both Z brackets. If you over-tighten it too much the LCD screen will go temporarily white. The vat should not be able to be lifted at all.

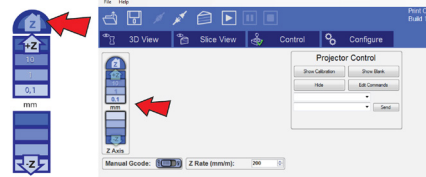


- 9 Tighten the central knob and loosen the four screws at the sides so the platform can move freely up and down.**

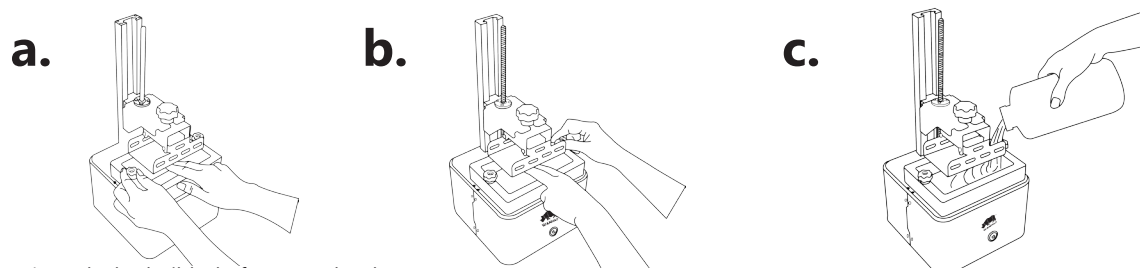


NOTE: ensure the two side knobs are completely free when lowering the platform to avoid damage to the screen.

- 11 Now click on the "Control" tab. Press the "Home" button to lower the platform onto the screen. The platform will move down to be set on the screen (level 0 in Z axis.) and stop.**



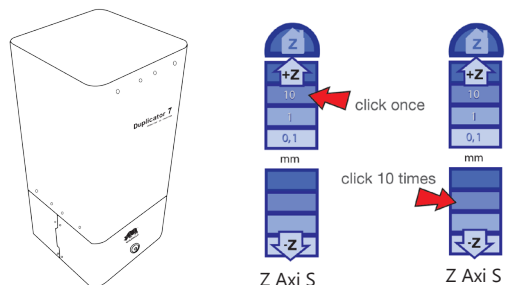
- 12 Press down on the middle of the Steel platform with one hand and tighten 4 screws at the side. All 4 screws should now be tight. You can check that you have homed the platform correctly by 11.visual checking there's no space between the LCD screen and the build platform. Now turn the screen off before fill the vat with resin. Prints don't consume a lot of resin, a quarter full vat is enough for a medium sized print.**



NOTE: Don't push the build platform too hard to avoid breaking the LCD screen. Make sure the platform touching the screen is sufficient.

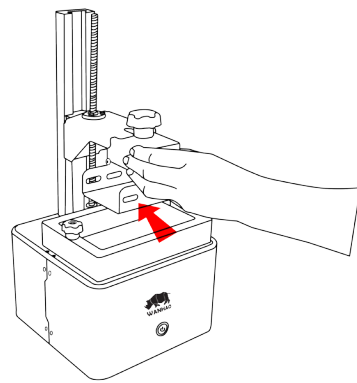
NOTE: once started, the print can't be paused and refilled so it's safer to over-fill and reuse the resin.

- 13 Place the hood back onto the printer. In "Control" panel press +10 button to lift the platform. Once resin is under the platform, move the platform back to home by clicking the -1 step button 10 times, leave a few seconds between clicks to enable the resin to move out from under the platform.**

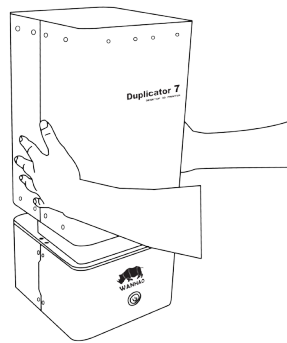


NOTE: wait 30sec between b and c, to enable resin to move under the platform. If you miscount it is safer to press an additional step, the platform will not move further when correctly located.

- 8 Side the platform onto the platform arm.**



- 10 Place the hood back onto the printer**



- 14 Switch on the screen at the front of the machine. Now you are ready to print, press "play". Once the print ,press "play".Once the print has finished,the machine will show "print 100% complete"and will stop.**



NOTE: Don't remove the hood during the print or the print will stop.



WANHAO DUPLICATOR 7 GETTING STARTED GUIDE

- 1 DOWNLOAD AND INSTALL SOFTWARE**

Go to www.wanhao3dprinter.com and download "Creation Workshop" and "D7driver_1" located at "Download software—Duplicator 7". The latest version is always online.

-Install the driver "D7driver_1" on your computer.

-Execute the Creation Workshop software by clicking on "CreationWorkshop.exe"

- 2 UNPACK AND CONNECT CABLES**

With the printer switched off, connect:

A.VGA or HDMI cable supplied to the computer and 3D printer.

B.USB cable supplied to the computer and 3D printer.

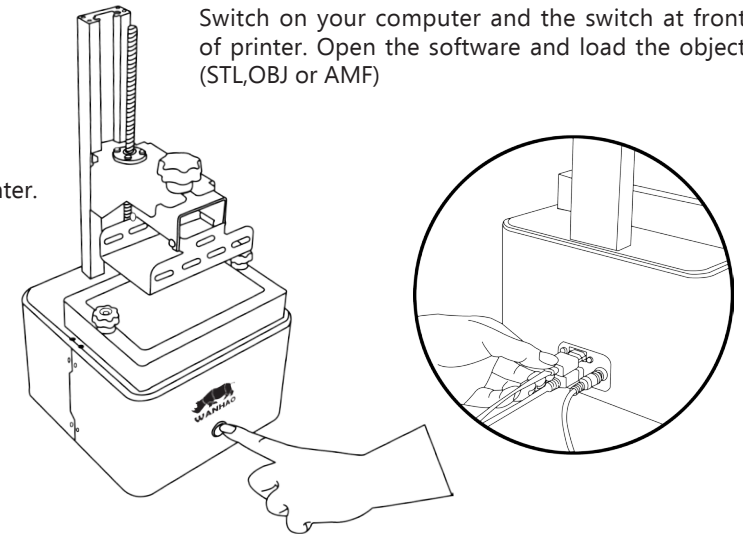
C.Power cable to the power supply.

- 3 CONFIGURE SCREEN RESOLUTION**

Go to your computer desktop, right click and open "Screen resolution". Set your screens to "Multiple Displays" and "extend this display mode", keeping your monitor as the main screen. Video instructions available at www.wanhao3dprinter.com "Video-D7".

- 4 SWITCH ON PRINTER**

Switch on your computer and the switch at front of printer. Open the software and load the object (STL,OBJ or AMF)



- 5 CONNECT SOFTWARE AND PRINTER**

In Creation Workshop, click on "Con-figure", and then open the subfolder "Configure Machine". In the configuration folder connect the printer to the computer by clicking on the button "Configure". Select the port you have connected the USB to and set the speed to 115200 and data bits to 8. Press "OK" and finally press "Apply Changes". To connect your computer and the the duplicator 7 .

TIP: If you experience any issue configuring the screen resolution or usb port, visit our video tutorial section at www.wanhao3dprinter.com "video".

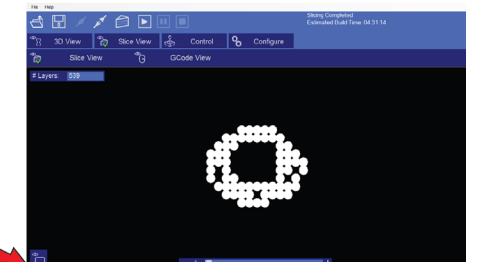
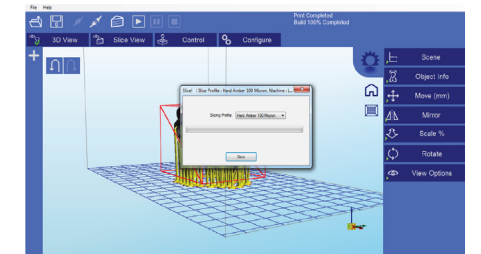
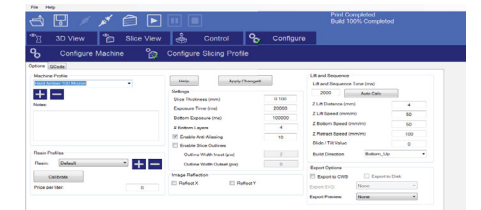
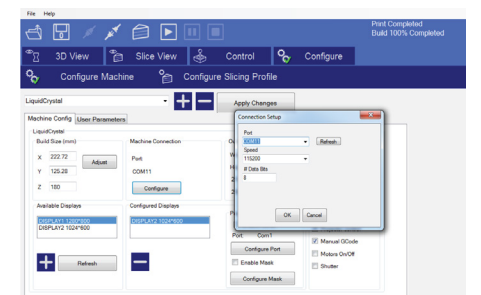
- 6 SELECT RESIN AND SLICE OBJECT**

Once the object is loaded and located in the build area check the settings of the printing profile. Go to the "Configure" screen and open the "Configure Slicing Profile" tab. Select the printing profile from the "Machine Profiles" list that matches your resin and desired re-solution.

Now click "3D View" and check that the object is correctly placed inside the printing area. Press the slice button to start the slicing operation. A confirmation window will appear.

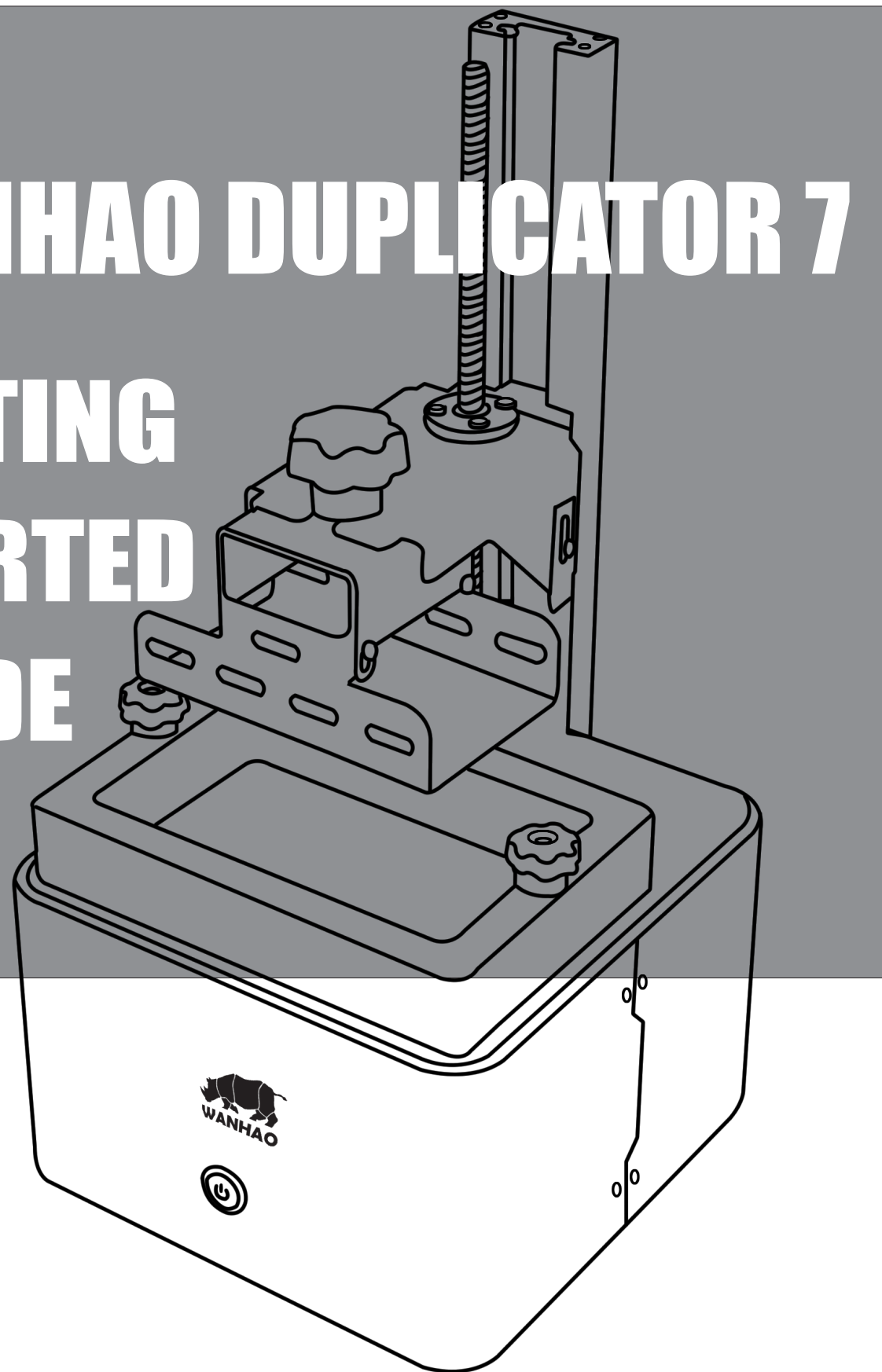
Now open "Slice View" to check that the first layer of every object is in contact with the platform.

Note: Click here to see the slice view on the 3D printer screen. Do not select while a vat with resin is in the printer or it will cure the resin.



WANHAO DUPLICATOR 7

GETTING STARTED GUIDE

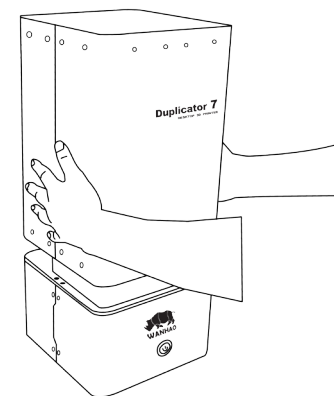
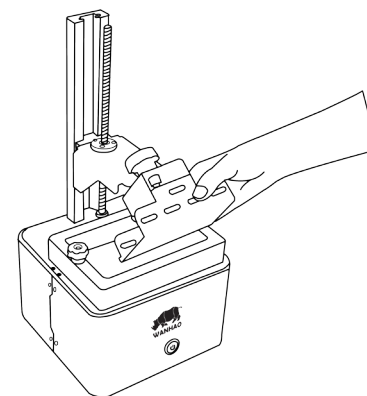


15 CLEANING AND FINISHING THE PRODUCT

In the "Control" panel lift the platform so that the base of your object is clear of the top of the vat. Lift off the hood and wearing gloves loosen the two side knobs and tilt the platform back, place the hood back and allow the resin to run off the platform into the vat for a few minutes. Lift the hood, loosen the middle knob and with absorbent paper under it, remove the platform completely and set it down on a surface that will not be affected by resin. Place the hood back on immediately to protect the resin in the vat from light. Remove as much liquid from the platform and object as possible with the paper. Waste paper can be left in the sunlight for a few minutes to harden and then be disposed of.



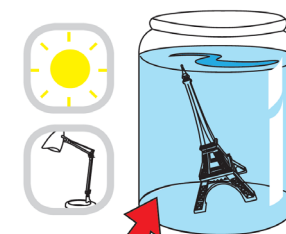
move the platform up enough so the base of your object is clear of the vat.



16 PROCESS FOR ALCOHOL WASHABLE UV RESIN

Place the platform to a washing-up bowl. Remove the objects by sliding the scraper in at their base. Wash off any liquid polymer in alcohol container. You can gently clean it with a soft brush or sponge, take care not to damage it, it will not achieve full hardness until after post exposing in light. An ultrasonic cleaner will clean your objects without the possibility of damaging them.

Check your object is thoroughly clean as resin cannot be easily removed afterwards and then leave it under water in sunlight for about 10 minutes. The longer you leave it under water the darker the colour will get, some colour change is inevitable. When it is completely post-exposed it will be strong and have a dry surface. Empty the contents of the vat back into the bottle by pouring through a sieve. With the vat on a flat surface wipe the inside thoroughly with absorbent paper. Replace the film when damaged.



Alcohol

WANHAO Precision Casting CO.,LTD
77, RENMIN ROAD ,JINHUA,CHINA
WANHAO Help Desk 86-571-23290996
(Operating Hours: Mon-sat ; 8:00am -5:00pm)

support@wanhao3dprinter.com
www.wanhao3dprinter.com